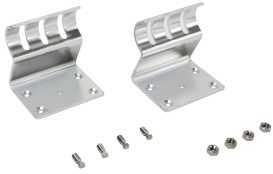




Project:	
Location:	
Model#: CHX-RDWM	Type:
Client:	Qty:
Prepared by:	Date:

SERIES SPECIFICATIONS

Wall Mount for RD1222020



ELECTRICAL SPECIFICATIONS

Short Circuit Protection: Auto Recovery.
The output shall return to normal when the fault condition is removed.

PHYSICAL SPECIFICATIONS

Finish Colour: Matte Aluminium

Finish Type: Anodized

Housing Material: Aluminium

SHIPPING INFORMATION

OrderingCode(s): CHX-RDWM

Box Quantity: 1