

Project:	
Location:	
Model#: TLPE143635K-347-WH	Type:
Client:	Qty:
Prepared by:	Date:

SERIES SPECIFICATIONS

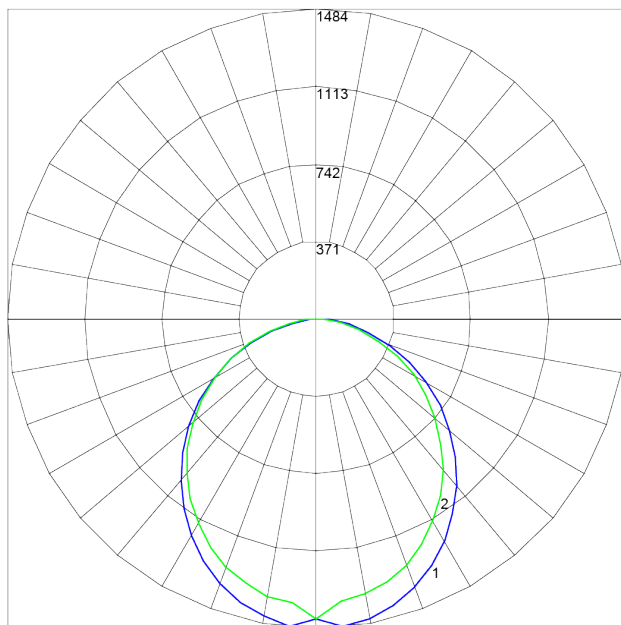


To supply TamLite's TLPE Series of LED Panel fixture as specified. The luminaire shall operate at 347 Vac and use an Everlight approved driver. The frame shall be constructed of painted aluminium with a PMMA diffuser. LEDs shall be as specified Everlight 67-21S LED chips. The luminaire shall be cULus Listed and DLC Listed. The fixture shall be DLC listed.



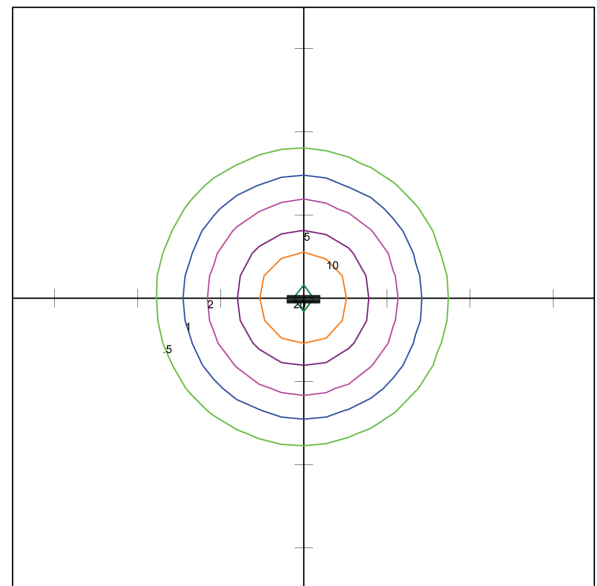
PERFORMANCE SPECIFICATIONS

Luminance Distribution Chart



Maximum Candela = 1484.22 Located At Horizontal Angle = 90, Vertical Angle = 5
 # 1 - Vertical Plane Through Horizontal Angles (90 - 270) (Through Max. Cd.)
 # 2 - Vertical Plane Through Horizontal Angles (0 - 180)

Isolux Diagram



TAMLITE LIGHTING CANADA
 CALEDON, ONTARIO
 TLPE1436-UNV-WH
 1X4 36W LED FLAT PANEL
 WITH WHITE TRANSLUCENT PANEL
 WHITE LEDs: OUTPUT = 3880.77 LMS.

Horizontal Footcandles
 Scale: 1 Inch = 10 Ft.
 Light Loss Factor = 1.00
 Lumens Per Lamp = 3880.77
 Total Lamp Lumens = 3880.77
 Mounting Height = 8.00 Ft.
 Maximum Calculated Value = 22.52 Fc
 Arrangement: Single



Project:	
Location:	
Model#: TLPE143635K-347-WH	Type:
Client:	Qty:
Prepared by:	Date:

Zonal Lumen Summary

ZONE	LUMENS	ZONE	LUMENS	ZONE	LUMENS	ZONE	LUMENS	ZONE	LUMENS
0-10	136.56	40-50	698.91	80-90	60.81	120-130	0.00	160-170	0.00
10-20	388.76	50-60	618.08	90-100	0.00	130-140	0.00	170-180	0.00
20-30	580.95	60-70	458.36	100-110	0.00	140-150	0.00	--	--
30-40	687.75	70-80	250.54	110-120	0.00	150-160	0.00	--	--

Co-efficient of Utilization

RC	80				70				50			30			10			0
RW	70	50	30	10	70	50	30	10	50	30	10	50	30	10	50	30	10	0
fc	20				20				20			20			20			0
RCR																		
0	119	119	119	119	116	116	116	116	111	111	111	106	106	106	102	102	102	100
1	109	104	100	96	106	102	98	95	98	95	92	94	91	89	90	88	86	84
2	99	91	84	79	97	89	83	78	86	80	76	82	78	74	79	76	73	70
3	91	80	72	66	88	79	71	65	76	69	64	73	67	63	70	66	62	60
4	83	71	62	56	81	70	62	55	67	60	55	65	59	54	63	57	53	51
5	76	64	55	48	74	62	54	48	60	53	47	58	52	47	57	51	46	44
6	71	57	48	42	69	56	48	42	55	47	41	53	46	41	51	45	41	39
7	65	52	43	37	64	51	43	37	50	42	37	48	41	36	47	41	36	34
8	61	47	39	33	59	47	39	33	45	38	33	44	38	33	43	37	32	31
9	57	44	35	30	56	43	35	30	42	35	30	41	34	30	40	34	29	28
10	53	40	32	27	52	40	32	27	39	32	27	38	31	27	37	31	27	25

Initial Lumen Output: 3880 lm

Luminaire Type: Direct

UL Classification: Dry Location Only

CCN Number: IFA07.E470484

Efficacy: 115.5 lm/W

Spacing Criteria: 1.16 (C0-180), 1.34 (C90-270)

Ambient Operating Temp: -20°C to +40°C

Limited Product Warranty: 5 Years

CBCP: 1475 cd

Environmental Rating(s): IP20

Certification Standards: cULus, DLC

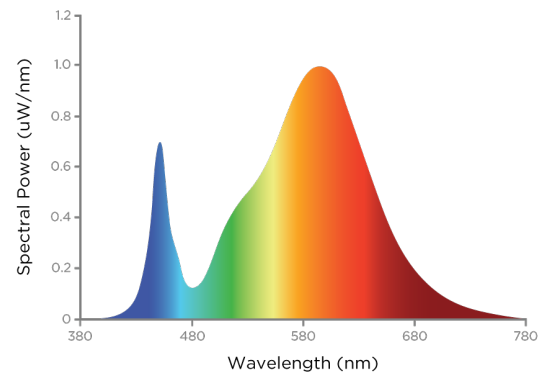
Project:	
Location:	
Model#: TLPE143635K-347-WH	Type:
Client:	Qty:
Prepared by:	Date:

LED SPECIFICATIONS

R Tables

R1	82	R9	7
R2	92	R10	80
R3	96	R11	80
R4	80	R12	66
R5	82	R13	85
R6	89	R14	98
R7	83	R15	75
R8	60	--	--

SPD



Source Type: LED

CRI: >80

Chromaticity: x=0.4051 y=0.3929

Manufacturer: Everlight®

L90: 54,000 Hrs

Colour Tolerance: 3 SDCM

Part Number: 67-21S

Colour Temperature: 3500K

Duv: 0.001

ELECTRICAL SPECIFICATIONS

Input Voltage: 347 Vac

Power Factor @277Vac: >.90

Dimming: 1-10VDC, (10% Min Light Level)

Driver Certifications: c-RU-us Class 2,

FCC Part 15 Class B, RoHS

Input Frequency: 50-60 Hz

Power Factor @347Vac: >.90

Dimming Current mA: 0.2

Fixture Draw: 33.6 W

THD @277Vac(%): Short Circuit

Protection: Auto Recovery. The output shall return to normal when the fault condition is removed.

PHYSICAL SPECIFICATIONS

Finish Colour: White

Housing Material: Aluminium

Weight: 9.1 kg

Finish Type: Powder Coated

Lens Material: PMMA

Entries: 4.500" Knockouts

Wiring: Junction Box

Lens Type: Diffuser

SHIPPING INFORMATION

OrderingCode(s): TLPE143635K-347V-WH

Box Weight: 9.5 kg

Box Quantity: 2

Box Dimensions (L-W-H): 715 x 715 x 115 mm

Project:	
Location:	
Model#: TLPE143635K-347-WH	Type:
Client:	Qty:
Prepared by:	Date:

LINE DRAWING

Line Drawings

