



Project:	
Location:	
Model#: TLPE143650K-UNV-WH	Type:
Client:	Qty:
Prepared by:	Date:

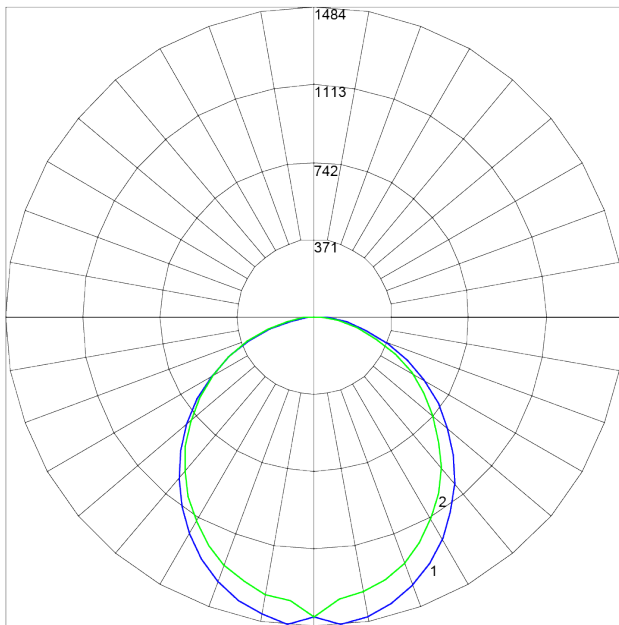
SERIES SPECIFICATIONS

To supply TamLite's TLPE Series of LED Panel fixture as specified. The luminaire shall operate at 120-277 Vac and use an Everlight approved driver. The frame shall be constructed of painted aluminium with a PMMA diffuser. LEDs shall be as specified Everlight 67-21S LED chips. The luminaire shall be cULus Listed. The fixture shall be DLC listed.



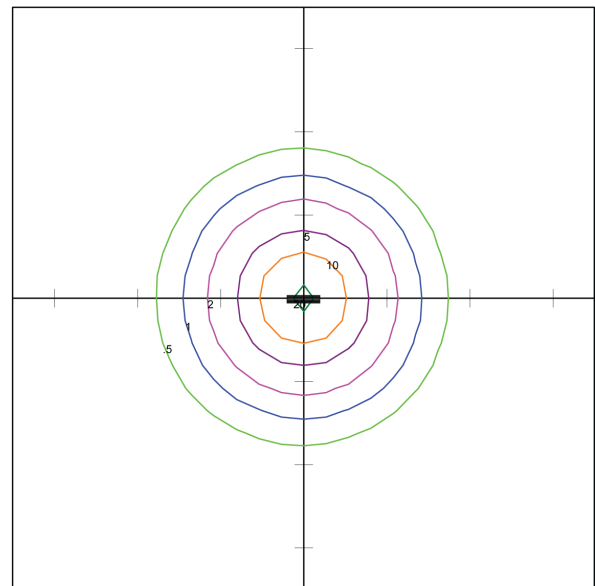
PERFORMANCE SPECIFICATIONS

Luminance Distribution Chart



Maximum Candela = 1484.22 Located At Horizontal Angle = 90, Vertical Angle = 5
 # 1 - Vertical Plane Through Horizontal Angles (90 - 270) (Through Max. Cd.)
 # 2 - Vertical Plane Through Horizontal Angles (0 - 180)

Isolux Diagram



TAMLITE LIGHTING CANADA
 CALEDON, ONTARIO
 TLPE1436-UNV-WH
 1X4 36W LED FLAT PANEL
 WITH WHITE TRANSLUCENT PANEL
 WHITE LEDs. OUTPUT = 3880.77 LMS.

Horizontal Footcandles
 Scale: 1 Inch = 10 Ft.
 Light Loss Factor = 1.00
 Lumens Per Lamp = 3880.77
 Total Lamp Lumens = 3880.77
 Mounting Height = 8.00 Ft
 Maximum Calculated Value = 22.52 Fc
 Arrangement: Single



Project:	
Location:	
Model#: TLPE143650K-UNV-WH	Type:
Client:	Qty:
Prepared by:	Date:

Zonal Lumen Summary

ZONE	LUMENS	ZONE	LUMENS	ZONE	LUMENS	ZONE	LUMENS	ZONE	LUMENS
0-10	136.56	40-50	698.91	80-90	60.81	120-130	0.00	160-170	0.00
10-20	388.76	50-60	618.08	90-100	0.00	130-140	0.00	170-180	0.00
20-30	580.95	60-70	458.36	100-110	0.00	140-150	0.00	--	--
30-40	687.75	70-80	250.54	110-120	0.00	150-160	0.00	--	--

Co-efficient of Utilization

RC	80				70				50			30			10			0	
RW	70	50	30	10	70	50	30	10	50	30	10	50	30	10	50	30	10	0	
fc	20				20				20			20			20			0	
RCR																			
0	119	119	119	119	116	116	116	116	111	111	111	106	106	106	102	102	102	100	
1	109	104	100	96	106	102	98	95	98	95	92	94	91	89	90	88	86	84	
2	99	91	84	79	97	89	83	78	86	80	76	82	78	74	79	76	73	70	
3	91	80	72	66	88	79	71	65	76	69	64	73	67	63	70	66	62	60	
4	83	71	62	56	81	70	62	55	67	60	55	65	59	54	63	57	53	51	
5	76	64	55	48	74	62	54	48	60	53	47	58	52	47	57	51	46	44	
6	71	57	48	42	69	56	48	42	55	47	41	53	46	41	51	45	41	39	
7	65	52	43	37	64	51	43	37	50	42	37	48	41	36	47	41	36	34	
8	61	47	39	33	59	47	39	33	45	38	33	44	38	33	43	37	32	31	
9	57	44	35	30	56	43	35	30	42	35	30	41	34	30	40	34	29	28	
10	53	40	32	27	52	40	32	27	39	32	27	38	31	27	37	31	27	25	

Initial Lumen Output: 3880 lm
Luminaire Type: Direct
UL Classification: Dry Location Only
CCN Number: IFAO7.E470484

Efficacy: 115.5 lm/W
Spacing Criteria: 1.18 (C0-180), 1.28 (C90-270)
Ambient Operating Temp: -20°C to +40°C
Limited Product Warranty: 5 Years

CBCP: 1475 cd
Environmental Rating(s): IP20
Certification Standards: cULus, DLC

Project:	
Location:	
Model#: TLPE143650K-UNV-WH	Type:
Client:	Qty:
Prepared by:	Date:

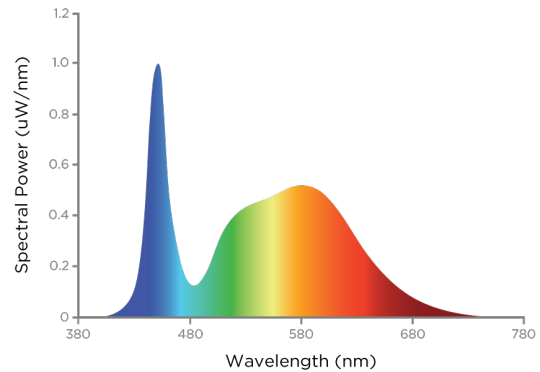
LED SPECIFICATIONS

R Tables

R1	81
R2	89
R3	93
R4	80
R5	80
R6	83
R7	86
R8	65

R9	5
R10	73
R11	78
R12	55
R13	84
R14	96
R15	76
--	--

SPD



Source Type: LED
CRI: >80
Chromaticity: x=0.3473 y=0.3547

Manufacturer: Everlight®
L90: 54,000 Hrs
Colour Tolerance: 3 SDCM

Part Number: 67-21S
Colour Temperature: 5000K
Duv: 0.0006

ELECTRICAL SPECIFICATIONS

Driver Manufacturer: Lifud®
Input Frequency: 50-60 Hz
Power Factor @277Vac: >.90
Dimming: 1-10VDC, (10% Min Light Level)
Driver Certifications: c-RU-us Class 2, FCC Part 15 Class B, RoHS

Driver Part Number: LF-GMDxxxYS V
Fixture Draw: 33.6 W
THD @ 120Vac(%): 15%
Dimming Current mA: 0.2

Input Voltage: 120~277 Vac
Power Factor @120Vac: >.90
THD @277Vac(%): 20%
Short Circuit Protection: Auto Recovery.
 The output shall return to normal when the fault condition is removed.

PHYSICAL SPECIFICATIONS

Finish Colour: White
Housing Material: Aluminium
Weight: 9.1 kg

Finish Type: Powder Coated
Lens Material: PMMA
Entries: 4.500" Knockouts

Wiring: Junction Box
Lens Type: Diffuser

SHIPPING INFORMATION

OrderingCode(s): TLPE143650K-UNV-WH
Box Weight: 19.3 kg

Box Quantity: 2

Box Dimensions (L-W-H): 1320 x 715 x 140 mm

Project:	
Location:	
Model#: TLPE143650K-UNV-WH	Type:
Client:	Qty:
Prepared by:	Date:

LINE DRAWING

Line Drawings

