

Project:	
Location:	
Model#: TLPE246040K-347-WH	Type:
Client:	Qty:
Prepared by:	Date:

SERIES SPECIFICATIONS

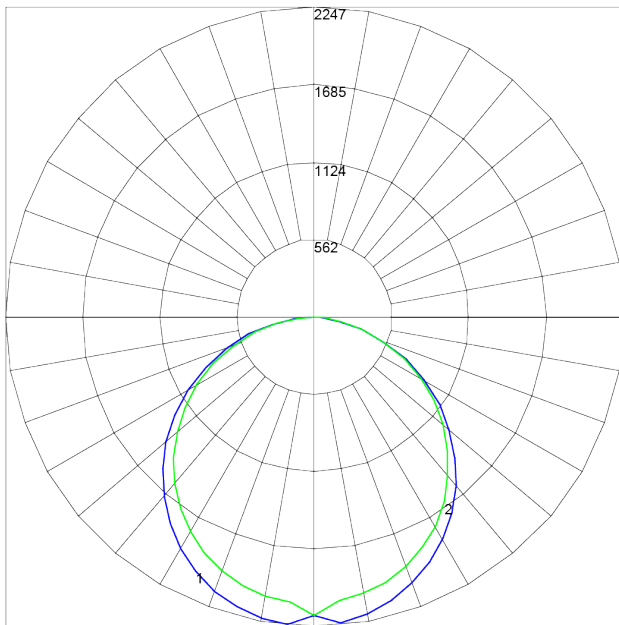


To supply Tamlite's TLPE Series of LED Panel fixture as specified. The luminaire shall operate at 347 Vac and use an Everlight approved driver. The frame shall be constructed of painted aluminium with a PMMA diffuser. LEDs shall be as specified Everlight 67-21S LED chips. The luminaire shall be cULus Listed and DLC Listed.



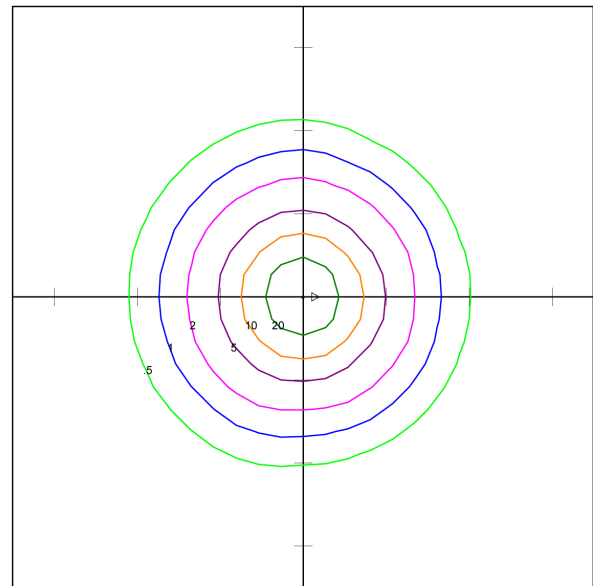
PERFORMANCE SPECIFICATIONS

Luminance Distribution Chart



Maximum Candela = 2247.058 Located At Horizontal Angle = 112.5, Vertical Angle = 5
 # 1 - Vertical Plane Through Horizontal Angles (112.5 - 292.5) (Through Max. Cd.)
 # 2 - Vertical Plane Through Horizontal Angles (0 - 180)

Isolux Diagram



Tamlite Lighting
 by Tamco Group Canada
 10 Perdue Crt Caledon Ontario
 TLPE2460-UNV-WH
 2X4 56W LED PANEL
 WITH WHITE TRANSLUCENT PANEL
 LED

Horizontal Footcandles
 Scale: 1 Inch = 10 Ft.
 Light Loss Factor = 1.00
 Lumens Per Lamp = N.A. (absolute photometry)
 Luminaire Lumens = 8581
 Mounting Height = 8.00 Ft
 Maximum Calculated Value = 35.57 Fc
 Arrangement: Single



Project:	
Location:	
Model#: TLPE246040K-347-WH	Type:
Client:	Qty:
Prepared by:	Date:

Zonal Lumen Summary

ZONE	LUMENS	ZONE	LUMENS	ZONE	LUMENS	ZONE	LUMENS	ZONE	LUMENS
0-10	206.59	40-50	1133.21	80-90	117.64	120-130	0.00	160-170	0.00
10-20	593.36	50-60	1025.98	90-100	1.23	130-140	0.00	170-180	0.00
20-30	901.15	60-70	779.44	100-110	0.00	140-150	0.00	--	--
30-40	1089.20	70-80	441.46	110-120	0.00	150-160	0.00	--	--

Co-efficient of Utilization

RC	80				70				50			30			10			0
RW	70	50	30	10	70	50	30	10	50	30	10	50	30	10	50	30	10	0
fc	20				20				20			20			20			0
RCR																		
0	119	119	119	119	116	116	116	116	111	111	111	106	106	106	102	102	102	100
1	109	104	100	96	106	102	98	94	97	94	91	93	91	88	90	88	86	84
2	99	90	84	78	96	88	82	77	85	80	75	82	77	73	79	75	72	69
3	90	79	71	64	87	78	70	64	75	68	63	72	66	62	69	65	61	58
4	82	70	61	55	80	69	61	54	66	59	53	64	58	53	62	56	52	50
5	76	63	54	47	73	61	53	47	59	52	46	57	51	46	56	50	45	43
6	70	56	47	41	68	55	47	41	54	46	40	52	45	40	50	44	40	37
7	65	51	42	36	63	50	42	36	49	41	36	47	40	35	46	40	35	33
8	60	47	38	32	59	46	38	32	45	37	32	43	37	32	42	36	31	29
9	56	43	34	29	55	42	34	29	41	34	29	40	33	28	39	33	28	26
10	53	39	31	26	51	39	31	26	38	31	26	37	30	26	36	30	26	24

Initial Lumen Output: 6290 lm
Luminaire Type: Direct
UL Classification: Dry Location Only
CCN Number: IFA07.E470484

Efficacy: 113 lm/W
Spacing Criteria: 1.26 (C0-180), 1.20 (C90-270)
Ambient Operating Temp: -20°C to +40°C
Limited Product Warranty: 5 Years

CBCP: 2240 cd
Environmental Rating(s): IP20
Certification Standards: cULus, DLC

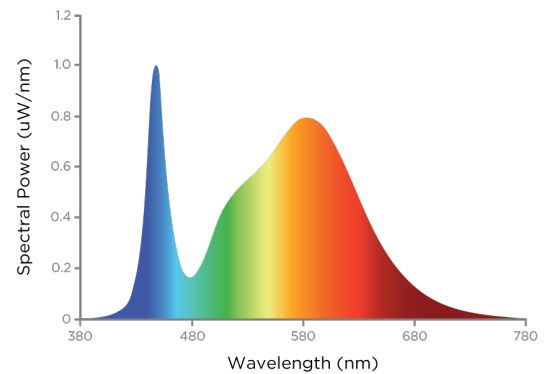
Project:	
Location:	
Model#: TLPE246040K-347-WH	Type:
Client:	Qty:
Prepared by:	Date:

LED SPECIFICATIONS

R Tables

R1	81	R9	9
R2	90	R10	76
R3	96	R11	79
R4	80	R12	56
R5	81	R13	85
R6	86	R14	98
R7	86	R15	75
R8	64	--	--

SPD



Source Type: LED
CRI: >80
Chromaticity: x=0.4380 y=0.4051

Manufacturer: Everlight®
L90: 54,000 Hrs
Colour Tolerance: 3 SDCM

Part Number: 67-21S
Colour Temperature: 4000K
Duv: 0.0029

ELECTRICAL SPECIFICATIONS

Input Voltage: 347 Vac
Power Factor @277Vac: >.90
Dimming: 1-10VDC, (10% Min Light Level)
Driver Certifications: c-RU-us Class 2,
 FCC Part 15 Class B, RoHS

Input Frequency: 50-60 Hz
Power Factor @347Vac: >.90
Dimming Current mA: 0.2

Fixture Draw: 57.9 W
THD @277Vac(%): Short Circuit
Protection: Auto Recovery. The output shall return to normal when the fault condition is removed.

PHYSICAL SPECIFICATIONS

Finish Colour: White
Housing Material: Aluminium
Weight: 9.1 kg

Finish Type: Powder Coated
Lens Material: PMMA
Entries: 4.500" Knockouts

Wiring: Junction Box
Lens Type: Diffuser

SHIPPING INFORMATION

OrderingCode(s): TLPE246040K-347V-WH
Box Weight: 19.3 kg

Box Quantity: 2

Box Dimensions (L-W-H): 1320 x 715 x 140 mm

Project:	
Location:	
Model#: TLPE246040K-347-WH	Type:
Client:	Qty:
Prepared by:	Date:

LINE DRAWING

Line Drawings

