

Project:	
Location:	
Model#: CMS2180BZ	Type:
Client:	Qty:
Prepared by:	Date:

SERIES SPECIFICATIONS

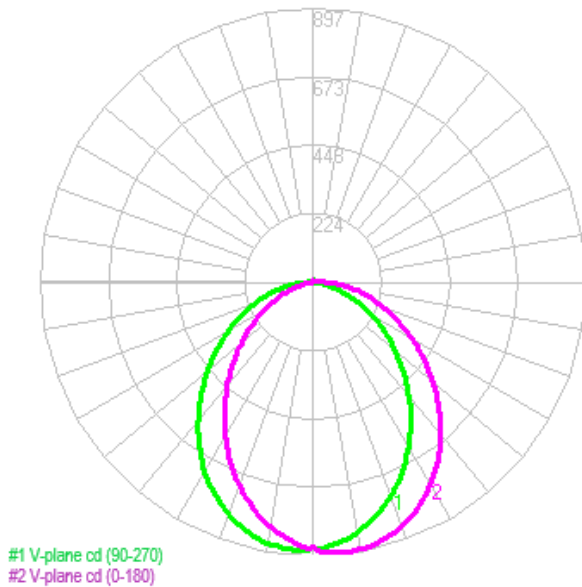


LED security floodlights are ideal for entrances, walkways, yards, driveways, and patios. Fixture mounts to a recessed junction box on wall or ceiling. Adjustable heads allow for precision aiming.



PERFORMANCE SPECIFICATIONS

Luminance Distribution Chart



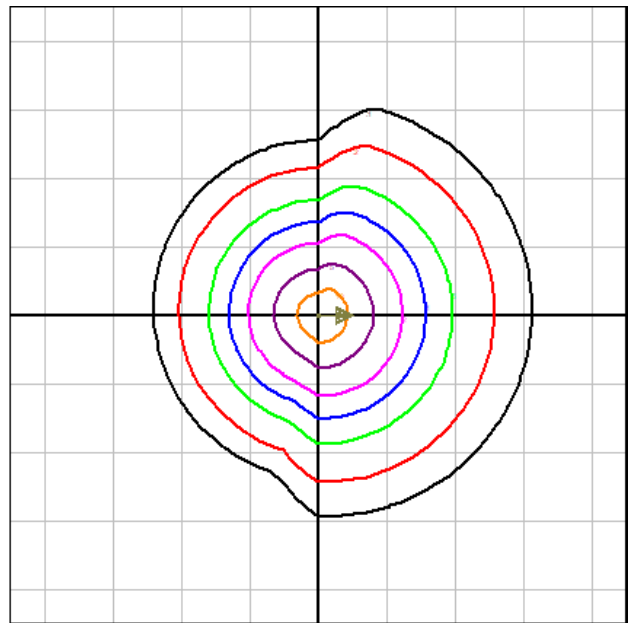
Initial Lumen Output: 2120lm

Certification Standards: cETLus, UL-773A

Efficacy: 68.8lm/W

Limited Product Warranty: 3 Year(s)

Isolux Diagram

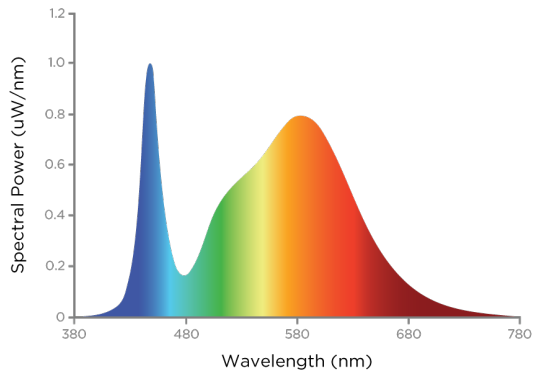


Max Candela: 896cd

Project:	
Location:	
Model#: CMS2180BZ	Type:
Client:	Qty:
Prepared by:	Date:

LED SPECIFICATIONS

SPD



Source Type: LED
Colour Temperature: 4000K

CRI: >70

L70: 40000 Hrs

ELECTRICAL SPECIFICATIONS

Input Voltage: 120Vac
Current Draw@ 120Vac: 0.2667

Input Frequency: 50-60Hz
Dimming: 0-10Vdc, (0% Min Light Level)

Fixture Draw: 32W

OCCUPANCY SENSOR INFORMATION

Sensor Type: Passive Infrared (PIR) -
 Outdoor
Programing Type: Dials on Body

Control Type: On-Off

Input Voltage: 120Vac

PHOTOCELL SENSOR INFORMATION

Control Type: On-Off

Input Voltage: 120Vac

Programing Type: Dials on Body, Manual
 over-ride at night



Project:	
Location:	
Model#: CMS2180BZ	Type:
Client:	Qty:
Prepared by:	Date:

PHYSICAL SPECIFICATIONS

Finish Colour: Bronze (RAL-8019)
Lens Material: Polycarbonate

Mounting: 4" Junction Box
Lens Type: Frosted

Housing Material: Polycarbonate

SHIPPING INFORMATION

OrderingCode(s): CMS2180BZ

Carton Quantity: 12

Box Quantity: 1

Carton Dimensions (L-W-H): 541 x 400 x
338mm

Box Dimensions (L-W-H): 192 x 175 x
160mm

Project:	
Location:	
Model#: CMS2180BZ	Type:
Client:	Qty:
Prepared by:	Date:

LINE DRAWING

Line Drawings

