

Project:	
Location:	
Model#: TRRMSCS2180BZ	Type:
Client:	Qty:
Prepared by:	Date:

## SERIES SPECIFICATIONS

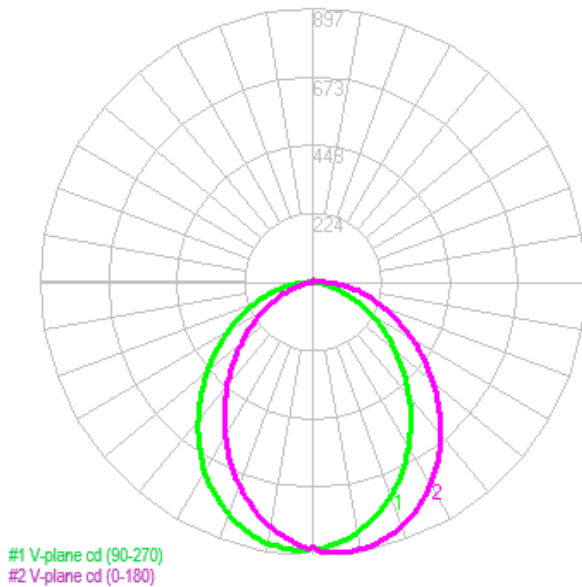


LED security floodlights are ideal for entrances, walkways, yards, driveways, and patios. Fixture mounts to a recessed junction box on wall or ceiling. Adjustable heads allow for precision aiming. White CCT can be adjusted on the sensor head.



## PERFORMANCE SPECIFICATIONS

**Luminance Distribution Chart**



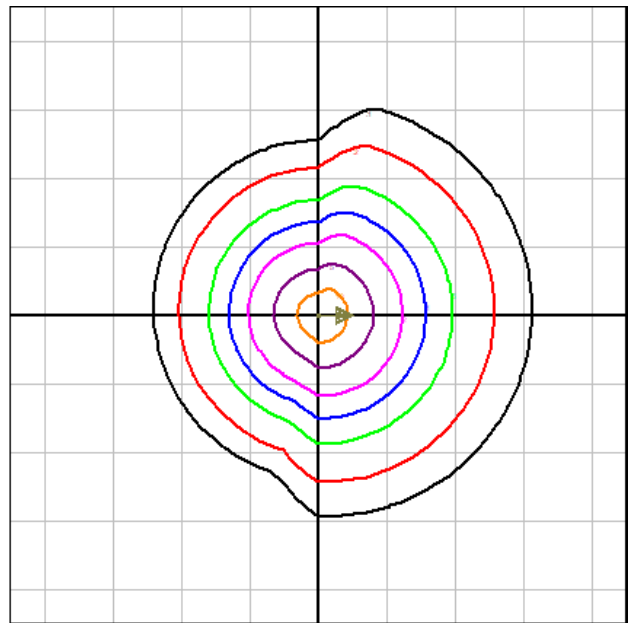
**Initial Lumen Output:** 2400lm

**Certification Standards:** cETLus, UL-773A

**Efficacy:** 75lm/W

**Limited Product Warranty:** 3 Year(s)

**Isolux Diagram**



**Max Candela:** 975cd



Project:	
Location:	
Model#: TRRMSCS2180BZ	Type:
Client:	Qty:
Prepared by:	Date:

#### LED SPECIFICATIONS

**Source Type:** LED **CRI:** >70 **L70:** 40000 Hrs  
**Colour Temperature:** 3000K~5000K

#### ELECTRICAL SPECIFICATIONS

**Input Voltage:** 120Vac **Input Frequency:** 50-60Hz **Fixture Draw:** 32W  
**Current Draw@ 120Vac:** 0.2667 **Dimming:** 0-10Vdc, (0% Min Light Level)

#### OCCUPANCY SENSOR INFORMATION

**Sensor Type:** Passive Infrared (PIR) - Outdoor **Control Type:** On-Off **Input Voltage:** 120Vac  
**Programing Type:** Dials on Body

#### PHOTOCELL SENSOR INFORMATION

**Control Type:** On-Off **Input Voltage:** 120Vac **Programing Type:** Dials on Body, Manual over-ride at night

#### PHYSICAL SPECIFICATIONS

**Finish Colour:** Bronze (RAL-8019) **Mounting:** 4" Junction Box **Housing Material:** Polycarbonate  
**Lens Material:** Polycarbonate **Lens Type:** Frosted

#### SHIPPING INFORMATION

**OrderingCode(s):** TRRMSCS2180BZ  
**Box Quantity:** 1