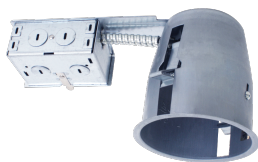


| | |
|---------------------|-------|
| Project: | |
| Location: | |
| Model#: DL4MED_IC_R | Type: |
| Client: | Qty: |
| Prepared by: | Date: |

SERIES SPECIFICATIONS



To supply Tamlite DL4MED Series of line voltage recessed Housing as specified. The Housing shall operate at 120Vac. Lamps shall be as specified, medium base lamps up to a maximum of the rated lamp wattage on the fixture nameplate. The lamps shall not be supplied with the fixture. The fixture shall be c-UL-us approved.



PERFORMANCE SPECIFICATIONS

NEMA Type: IC Rated
Certification Standards: cULus

Environmental Rating(s): IC Rated, Air
Tight ASTM E283
Limited Product Warranty: 1 Year

UL Classification: Damp Location Listed

LED SPECIFICATIONS

Source Type: Incandescent

ELECTRICAL SPECIFICATIONS

Input Voltage: 120Vac

Input Frequency: 50-60Hz

Max Operating Case Temperature: 90C

PHYSICAL SPECIFICATIONS

Finish Colour: Galvanized
Mounting: Compression Clamp

Finish Type: Galvanized Steel
Housing Material: Galvanized Steel

Wiring: 7x 7_8" Knockouts

SHIPPING INFORMATION

OrderingCode(s): DL4MED_IC_R
Carton Weight: 4.3

Carton Quantity: 6

Carton Dimensions (I-W-H): 450 x 410 x 178 mm