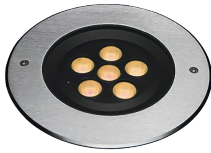




Project:	
Location:	
Model#: AAGL323KGR-15D-24V	Type:
Client:	Qty:
Prepared by:	Date:

SERIES SPECIFICATIONS

The AAGL series is an in ground LED light with grey diecast Aluminium housing and tempered glass lens. It's wet location rating makes it an ideal fixture for landscape and pathway lighting.



PERFORMANCE SPECIFICATIONS

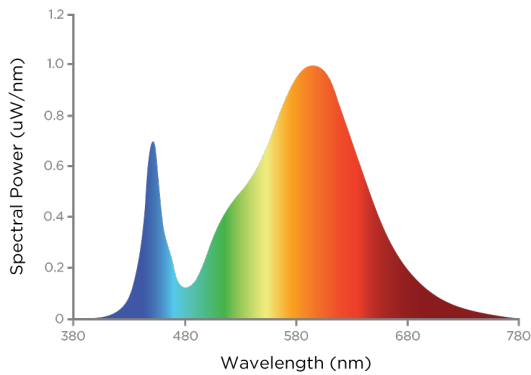
Beam Angle: 15 deg

UL Classification: Wet Location Listed

Limited Product Warranty: 3 Year(s)

LED SPECIFICATIONS

SPD



Source Type: LED

Colour Temperature: 3000K



Project:	
Location:	
Model#: AAGL323KGR-15D-24V	Type:
Client:	Qty:
Prepared by:	Date:

ELECTRICAL SPECIFICATIONS

Input Voltage: 24Vdc

Fixture Draw: 32.00 W

Max On-Delay: < 1S

Over Temperature Protection: Auto
recovery. Current returns to normal after
over temperature is removed.

SHIPPING INFORMATION

Box Quantity: 1