

Project:	
Location:	
Model#: TASLL3SS	Type:
Client:	Qty:
Prepared by:	Date:

SERIES SPECIFICATIONS

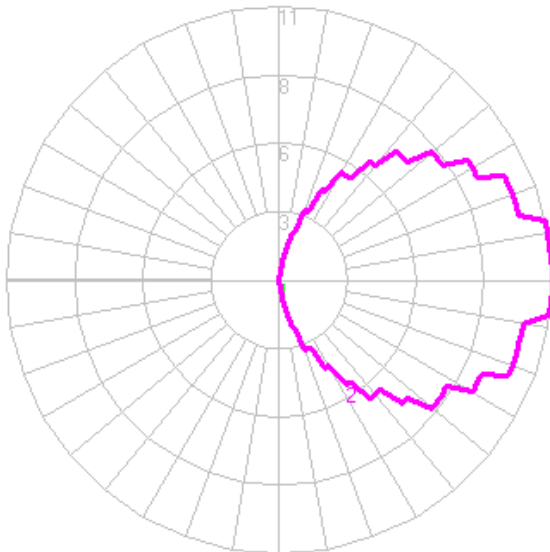


To supply TamLite's TASLL Series of LED Step Light Luminaire as specified. The Luminaire shall operate at 120Vac. The face plate shall be constructed of powder coated steel. The lens shall be either vertical louvered, horizontal louvered or open diffused. LEDs shall be as specified Hongli LED chips. The luminaire shall be c-UL-us listed.

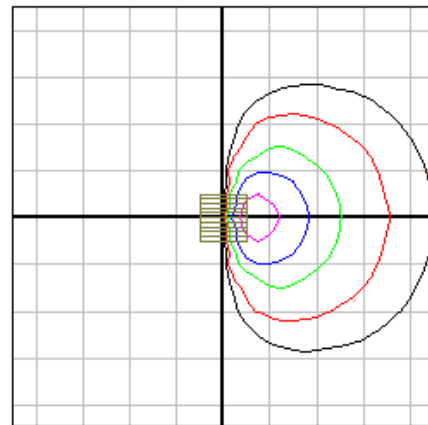


PERFORMANCE SPECIFICATIONS

Luminance Distribution Chart



Isolux Diagram



Initial Lumen Output: 29lm
UL Classification: Dry Location Listed

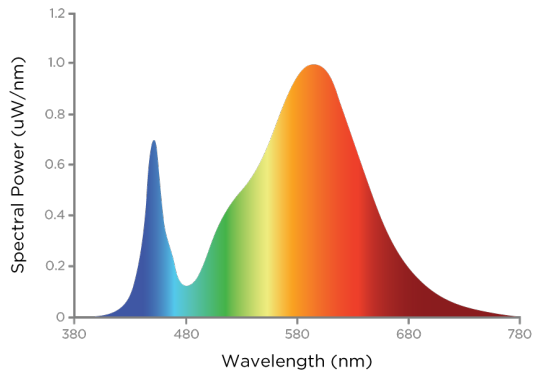
Max Candela: 11cd
Certification Standards: cULus

Environmental Rating(s): IP44
Limited Product Warranty: 1 year

Project:	
Location:	
Model#: TASLL3SS	Type:
Client:	Qty:
Prepared by:	Date:

LED SPECIFICATIONS

SPD



Source Type: LED

Colour Temperature: 3000K

ELECTRICAL SPECIFICATIONS

Input Voltage: 120Vac
Current Draw@ 120Vac: 0.0100A

Input Frequency: 50-60Hz

Fixture Draw: .75W

PHYSICAL SPECIFICATIONS

Finish Colour: Stainless Steel

Mounting: Recessed J-Box Mount

SHIPPING INFORMATION

OrderingCode(s): TASLL3SS
Box Weight: .23 kg
Carton Weight: 5.4 kg

Box Quantity: 1
Carton Quantity: 24

Box Dimensions (L-W-H): 77 x 44 x 120 mm
Carton Dimensions (L-W-H): 270 x 250 x 245 mm

Project:	
Location:	
Model#: TASLL3SS	Type:
Client:	Qty:
Prepared by:	Date:

LINE DRAWING

Line Drawings

