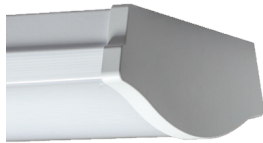


Project:	
Location:	
Model#: TLCR45040K-UN4	Type:
Client:	Qty:
Prepared by:	Date:

SERIES SPECIFICATIONS

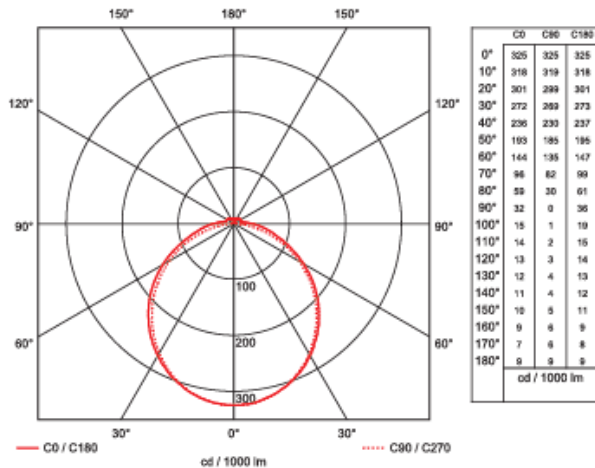


To supply Tamlite TLCR series of LED Wrap fixtures as specified. The luminaire shall operate at 347Vac. The housing shall be constructed of powder-coated aluminum with a heat and impact resistant tempered PMMA lens. All parts shall be corrosion resistant. The LEDs shall be supplied with the luminaire. The fixture shall be c-ULus listed.



PERFORMANCE SPECIFICATIONS

Luminance Distribution Chart



Initial Lumen Output: 4717lm
UL Classification: Dry Location Listed
Limited Product Warranty: 5 Year(s)

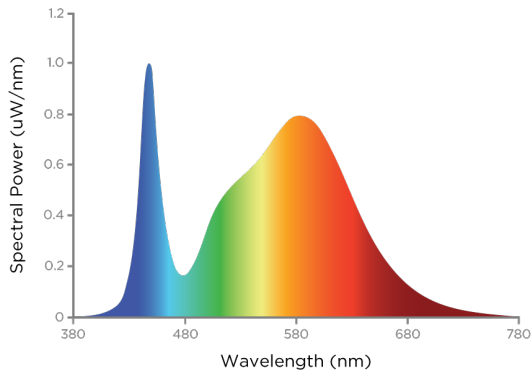
Efficacy: 102.27lm/W
Ambient Operating Temp: -20C to +40C

Environmental Rating(s): IP20
Certification Standards: cULus

Project:	
Location:	
Model#: TLCR45040K-UN4	Type:
Client:	Qty:
Prepared by:	Date:

LED SPECIFICATIONS

SPD



Source Type: LED
Colour Temperature: 4000K

CRI: >80
Chromaticity: x= 0.4299; y= 0.4039

L70: >50000hrs

ELECTRICAL SPECIFICATIONS

Input Voltage: 347Vac
Current Draw@347Vac: 0.4167A
THD @347Vac(%): 20

Input Frequency: 50-60Hz
Max On-Delay: 1 S
Dimming: 1-10Vdc, (10% Min Light Level)

Fixture Draw: 46.13W
Power Factor @347Vac: >90

PHYSICAL SPECIFICATIONS

Finish Colour: White
Mounting: Surface, Suspended
Lens Type: Frosted Prismatic

Finish Type: Textured Powder Coat
Housing Material: Die-Cast Aluminium

Wiring: Luminaire Disconnect
Lens Material: Acrylic

SHIPPING INFORMATION

OrderingCode(s): TLCR45040K-UN4
Carton Quantity: 6

Box Quantity: 1
Carton Dimensions (I-W-H): 1230 x 385 x 235mm

Box Dimensions (L-W-H): 1210 x 213 x 73mm

Project:	
Location:	
Model#: TLCR45040K-UN4	Type:
Client:	Qty:
Prepared by:	Date:

LINE DRAWING

Line Drawings

