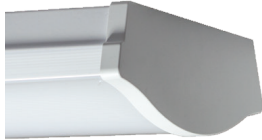


Project:	
Location:	
Model#: TLCR45050K-UN4	Type:
Client:	Qty:
Prepared by:	Date:

## SERIES SPECIFICATIONS

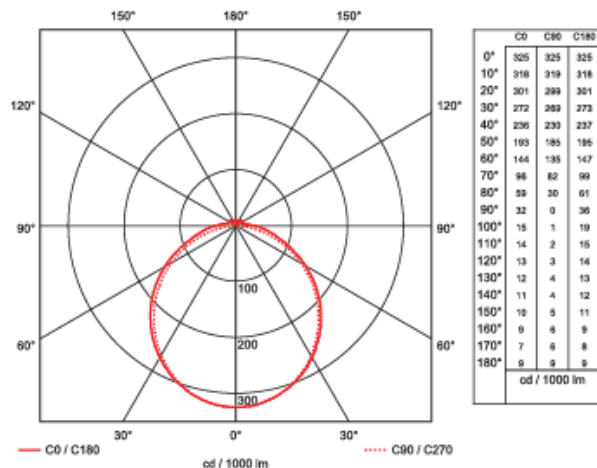


To supply Tamlite TLCR series of LED Wrap fixtures as specified. The luminaire shall operate at 347Vac. The housing shall be constructed of powder-coated aluminum with a heat and impact resistant tempered PMMA lens. All parts shall be corrosion resistant. The LEDs shall be supplied with the luminaire. The fixture shall be c-ULus listed.



## PERFORMANCE SPECIFICATIONS

### Luminance Distribution Chart



**Initial Lumen Output:** 4887lm

**UL Classification:** Dry Location Listed

**Limited Product Warranty:** 5 Year(s)

**Efficacy:** 106.11lm/W

**Ambient Operating Temp:** -20C to +40C

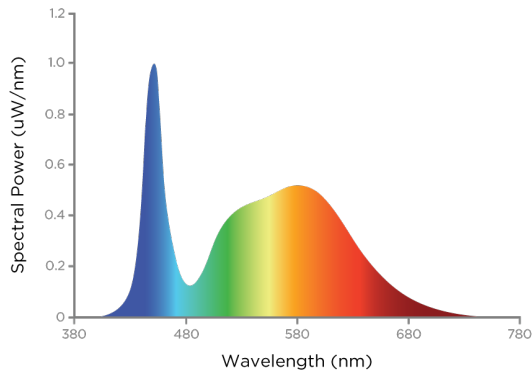
**Environmental Rating(s):** IP20

**Certification Standards:** cULus

Project:	
Location:	
Model#: TLCR45050K-UN4	Type:
Client:	Qty:
Prepared by:	Date:

## LED SPECIFICATIONS

### SPD



**Source Type:** LED  
**Colour Temperature:** 5000K

**CRI:** >80  
**Chromaticity:** x= 0.3391; y= 0.3482

**L70:** >50000hrs

## ELECTRICAL SPECIFICATIONS

**Input Voltage:** 347Vac  
**Current Draw@347Vac:** 0.4167A  
**THD @347Vac(%):**

**Input Frequency:** 50-60Hz  
**Max On-Delay: Dimming:** 1-10Vdc, (10%  
 Min Light Level)

**Fixture Draw:** 46.06W  
**Power Factor @347Vac:** >90

## PHYSICAL SPECIFICATIONS

**Finish Colour:** White  
**Mounting:** Surface, Suspended  
**Lens Type:** Frosted Prismatic

**Finish Type:** Textured Powder Coat  
**Housing Material:** Die-Cast Aluminium

**Wiring:** Luminaire Disconnect  
**Lens Material:** Acrylic

## SHIPPING INFORMATION

**OrderingCode(s):** TLCR45050K-UN4  
**Carton Quantity:** 6

**Box Quantity:** 1  
**Carton Dimensions (L-W-H):** 1230 x 385 x  
 235mm

**Box Dimensions (L-W-H):** 1210 x 213 x  
 73mm

Project:	
Location:	
Model#: TLCR45050K-UN4	Type:
Client:	Qty:
Prepared by:	Date:

## LINE DRAWING

### Line Drawings

