

Project:	
Location:	
Model#: BOL8RD4236SWCR-WRV-BK	Type:
Client:	Qty:
Prepared by:	Date:

## SERIES SPECIFICATIONS



Whether it's a parking area, a building entrance, or full campus area lighting, TamLite Bollards are part of your outdoor architectural lighting. Extruded Aluminum Housing with Flush Mounting Base & Vandal-Resistant Screws, Domed Top, Powder coat Finish Over a Chromate Conversion Coating, Internal Ballast Tray for Easy Maintenance. Fixture shall be cULus listed



## PERFORMANCE SPECIFICATIONS

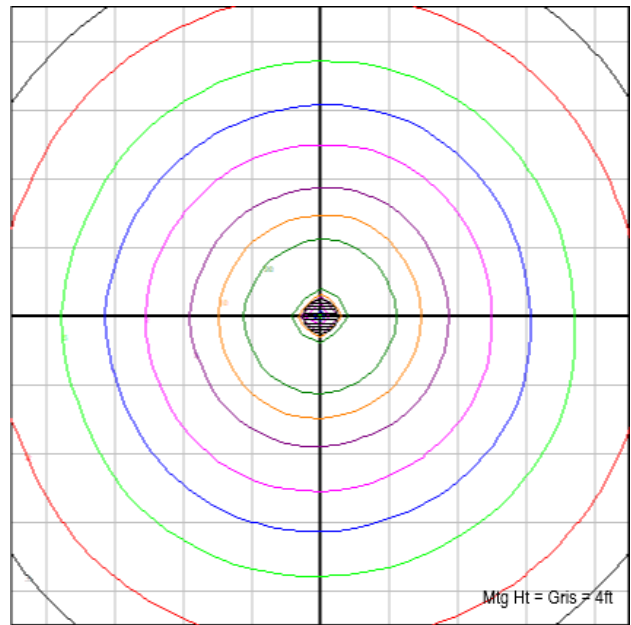
Luminance Distribution Chart



**Initial Lumen Output:** 4113lm  
**BUG Rating:** B2-U3-G1  
**Ambient Operating Temp:** -40C to +40C

**Efficacy:** 116.8lm/W  
**Environmental Rating(s):** IP65  
**Certification Standards:** cUL Listed

Isolux Diagram



**Max Candela:** 1234.9cd (247.5H, 42V)  
**UL Classification:** Wet Location Listed

Project:	
Location:	
Model#: BOL8RD4236SWCR-WRV-BK	Type:
Client:	Qty:
Prepared by:	Date:

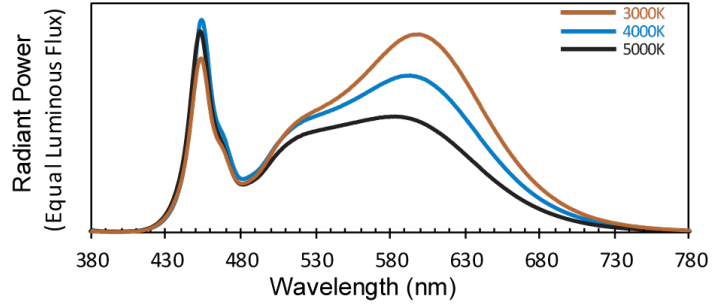
## LED SPECIFICATIONS

### R Tables

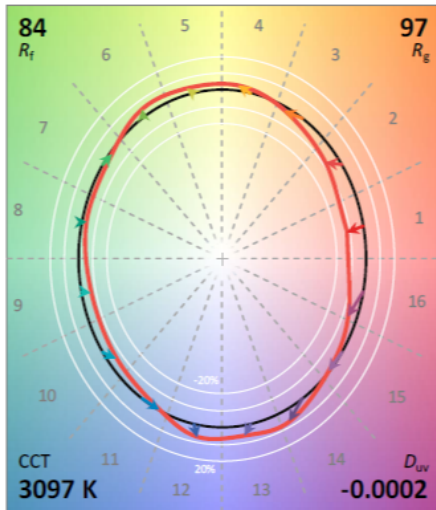
<b>R1</b>	80
<b>R2</b>	90
<b>R3</b>	97
<b>R4</b>	80
<b>R5</b>	80
<b>R6</b>	87
<b>R7</b>	83
<b>R8</b>	58

<b>R9</b>	2
<b>R10</b>	77
<b>R11</b>	80
<b>R12</b>	70
<b>R13</b>	82
<b>R14</b>	99
<b>R15</b>	72
<b>Ra</b>	85

### SPD



### TM-30



Source Type: LED  
 Rg: 97  
 Chromaticity: x=0.4299, y=0.4011

CRI: 82  
 L90: > 54000 hrs

Rf: 85  
 Colour Temperature: 3000K, 4000K,  
 5000K Field Selectable



Project:	
Location:	
Model#: BOL8RD4236SWCR-WRV-BK	Type:
Client:	Qty:
Prepared by:	Date:

#### ELECTRICAL SPECIFICATIONS

**Driver Manufacturer:** Fahold  
**Input Frequency:** 50-60Hz  
**Current Draw @ 277Vac:** 0.1271A  
**Power Factor @ 120Vac:** > .90  
**THD @ 120Vac(%):** <20%  
**Surge Suppression:** 10kV

**Driver Part Number:** FD-42T-054B  
**Fixture Draw:** 35.2W  
**Current Draw @ 347Vac:** 0.1014A  
**Power Factor @ 277Vac:** >.90  
**THD @ 277Vac(%):** <20%  
**Dimming:** 0-10Vdc, (0% Min Light Level)

**Input Voltage:** 120~347Vac  
**Current Draw @ 120Vac:** 0.2933  
**Max On-Delay:** < 1 S  
**Power Factor @ 347Vac:** >.90  
**THD @ 347Vac(%):** <20%

#### PHYSICAL SPECIFICATIONS

**Finish Colour:** Black (RAL-9011)  
**Housing Material:** Extruded Aluminium  
**Reflector Material:** Spun Aluminium  
Specular

**Finish Type:** Powder coat Finish Over a  
Chromate Conversion Coating  
**Lens Material:** Borosilicate Glass

**Mounting:** Anchor bolts with mounting plate  
**Lens Type:** Type V Clear Prismatic

#### SHIPPING INFORMATION

**OrderingCode(s):** BOL8RD4236SWCR-WRV-BK

**Carton Quantity:** 6

**Box Quantity:** 1

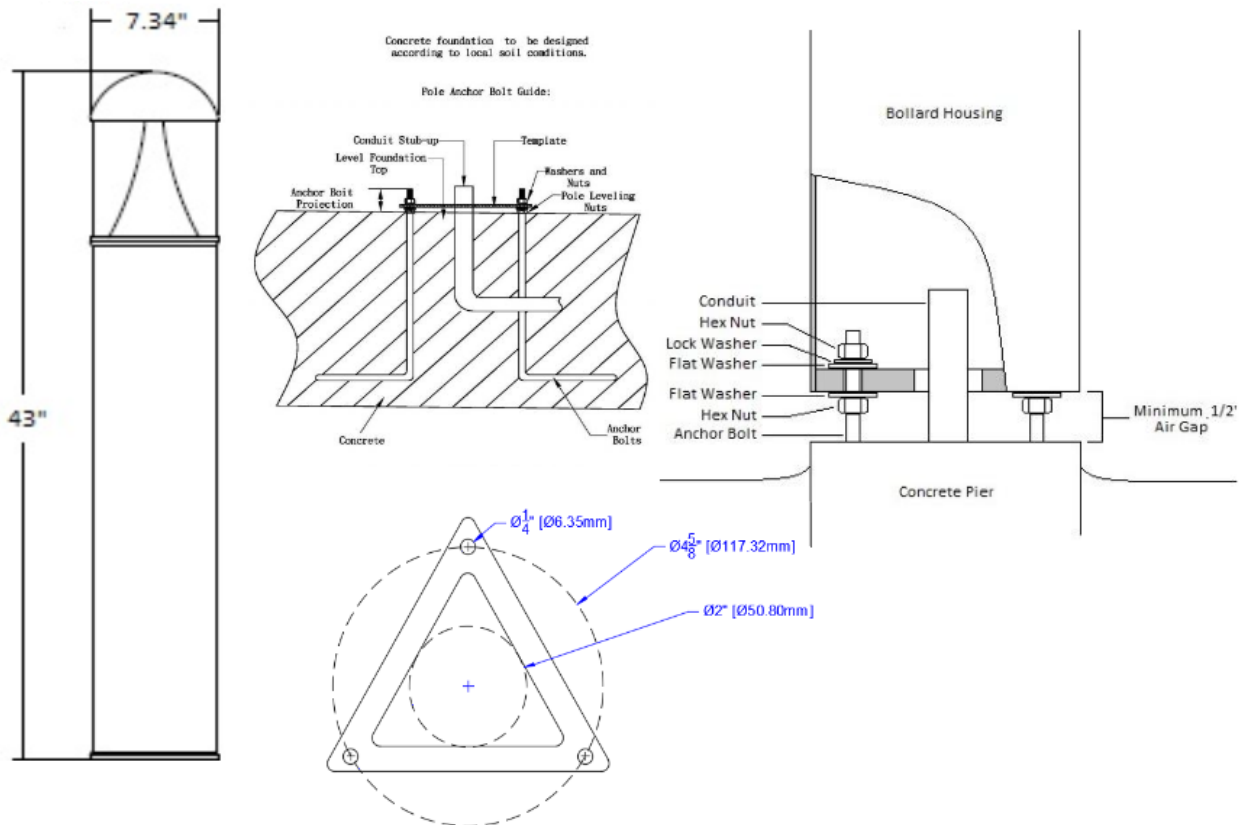
**Carton Dimensions (L-W-H):** 1190 x 480 x  
700 mm

**Box Dimensions (L-W-H):** 1147 x 227 x  
227 mm

Project:	
Location:	
Model#: BOL8RD4236SWCR-WRV-BK	Type:
Client:	Qty:
Prepared by:	Date:

LINE DRAWING

Line Drawings



Note; Tamlite Lighting does not make any stipulations as to concrete or earthworks. Please contact a professional engineer or your authority having jurisdiction for further details



Project:	
Location:	
Model#: BOL8RD4236SWCR-WRV-BK	Type:
Client:	Qty:
Prepared by:	Date:

SERIES ARCHITECTURE

Series Architecture

BOL - 8 - RD - 42 - 36 - SW - WRV - BZ -

Part	Diameter		Shape		Height		Wattage		CCT		Voltage		Finish		Options
BOL	8	8 Inch	RD	Round	42	42 Inch	36	36W	SW	3K, 4K, 5K Selectable	WRV	120-347VAC	BZ	Bronze	
													BK	Black	
													WH	White	
													CC	Custom	