



Project:	
Location:	
Model#: TLNR22030K-UN4	Type:
Client:	Qty:
Prepared by:	Date:

SERIES SPECIFICATIONS

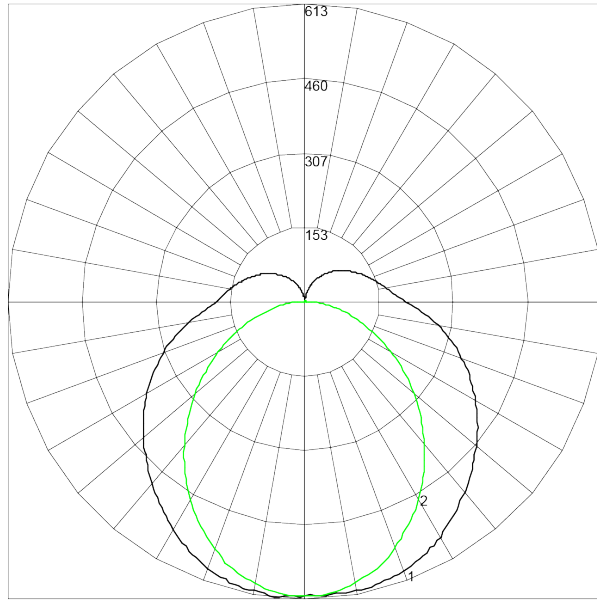


To supply TamLite TLNR series of LED Wrap fixtures as specified. The luminaire shall operate at 347Vac. The housing shall be constructed of powder-coated Aluminium with a heat and impact resistant tempered PMMA lens. All parts shall be corrosion resistant. The LEDs shall be supplied with the luminaire. The fixture shall be cULus Listed.



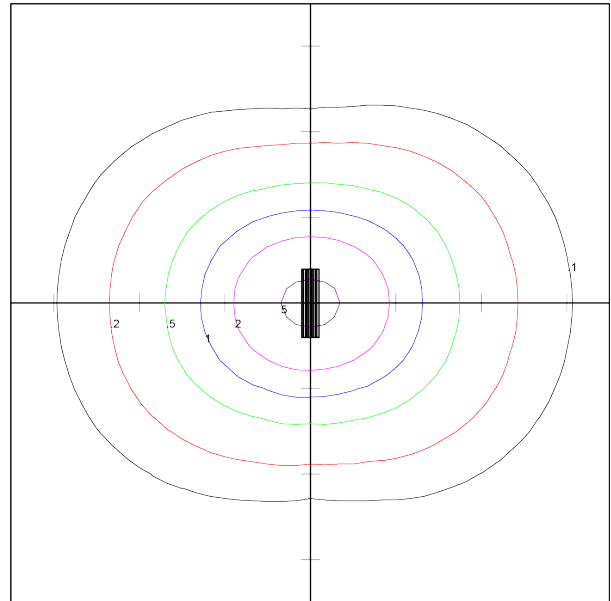
PERFORMANCE SPECIFICATIONS

Luminance Distribution Chart



Maximum Candela = 613.28 Located At Horizontal Angle = 180, Vertical Angle = 5
 # 1 - Vertical Plane Through Horizontal Angles (0 - 180)
 # 2 - Vertical Plane Through Horizontal Angles (90 - 270)

Isolux Diagram



Tamlite Lighting
 TLNR22030K-UNV
 Tamlite 2FT LED Wrap Fixture

Horizontal Footcandles
 Scale: 1 Inch = 10 Ft.
 Light Loss Factor = 1.00
 Lumens Per Lamp = 2491.6
 Total Lamp Lumens = 2491.6
 Mounting Height = 10.00 Ft
 Maximum Calculated Value = 6.08 Fc
 Arrangement: Single

Zonal Lumen Summary

ZONE	LUMENS	ZONE	LUMENS	ZONE	LUMENS	ZONE	LUMENS	ZONE	LUMENS
0-10	57.62	40-50	321.63	80-90	160.02	120-130	56.55	160-170	3.67
10-20	165.44	50-60	310.2	90-100	116.8	130-140	38.98	170-180	0.5
20-30	250.7	60-70	275.72	100-110	95.75	140-150	23.73	--	--
30-40	303.07	70-80	223.84	110-120	75.72	150-160	11.56	--	--

Co-efficient of Utilization

cc	80				70				50			30			10			0
wall	70	50	30	10	70	50	30	10	50	30	10	50	30	10	50	30	10	0
fc	20				20				20			20			20			0
RCR																		
0	115	115	115	115	110	110	110	110	102	102	102	94	94	94	86	86	86	83
1	102	97	92	87	98	93	88	84	85	82	78	78	75	73	72	70	68	64
2	92	83	75	69	88	80	73	67	73	68	63	67	63	59	62	58	55	52
3	84	72	63	56	80	69	61	55	64	57	52	59	53	49	54	50	46	43
4	76	64	54	47	73	61	53	46	56	49	43	52	46	41	48	43	39	36
5	70	57	47	40	67	54	46	39	50	43	37	47	40	35	43	38	33	31
6	64	51	41	35	61	49	40	34	45	38	32	42	36	31	39	33	29	27
7	60	46	37	31	57	44	36	30	41	34	28	38	32	27	35	30	26	24
8	55	42	33	27	53	40	32	26	38	30	25	35	29	24	33	27	23	21
9	52	38	30	24	49	37	29	24	34	28	23	32	26	22	30	25	21	19
10	48	35	27	22	46	34	26	21	32	25	21	30	24	20	28	23	19	17

Initial Lumen Output: 2451lm

Beam Angle: 100 deg

Spacing Criteria: 1.2(0-180), 1.28(90-270)

Ambient Operating Temp: -20C to +40C

CCN Number: IFAM7.E359675

Efficacy: 116.6lm/W

Field Angle: 180 deg

Environmental Rating(s): IP20

Certification Standards: UL Safety US-CA
, DLC

Limited Product Warranty: 5 Year(s)

CBCP: 613cd

Luminaire Type: Semi-Direct

UL Classification: Dry Location Only

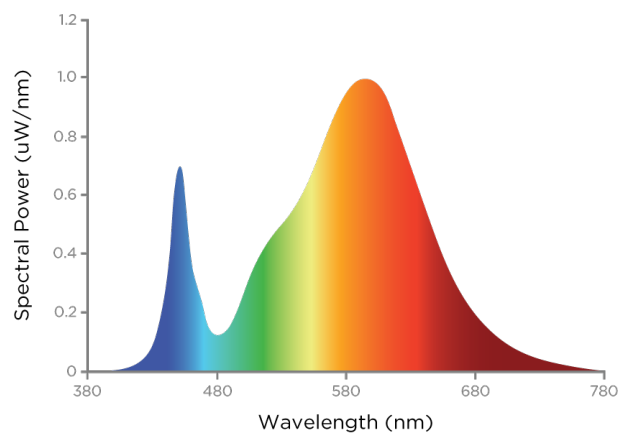
DLC Number: WWWBTI

LED SPECIFICATIONS

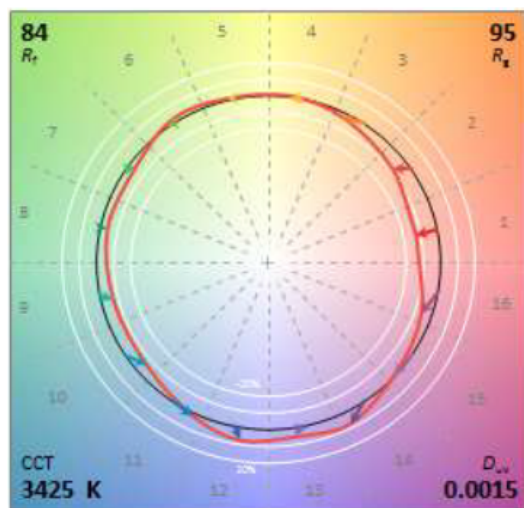
R Tables

R1	81	R9	6
R2	91	R10	81
R3	96	R11	80
R4	81	R12	71
R5	82	R13	84
R6	90	R14	98
R7	82	R15	74
R8	59	--	--

SPD



TM-30



Source Type: LED

Rg: 95

Duv: 0.0021

CRI: >80

L70: >50000 Hrs

Rf: 85

Colour Temperature: 3000K

ELECTRICAL SPECIFICATIONS

Driver Manufacturer: Arcata

Fixture Draw: 19.64W

Over Temperature Protection: Auto Recovery. The output shall return to normal when the over heating condition is removed.

Input Voltage: 347Vac

Max On-Delay: < 1 S

Short Circuit Protection: Auto Recovery. The output shall return to normal when the fault condition is removed.

Input Frequency: 50-60Hz

Dimming: 1-10Vdc, (10% Min Light Level)

Driver Certifications: c-RU-us Class 2, FCC Part 15 Class B, RoHS

PHYSICAL SPECIFICATIONS

Finish Colour: White

Mounting: Surface, Suspended

Lens Type: Frosted Prismatic

Finish Type: Textured Powder Coat over Chromate Conversion Coat

Housing Material: Heavy Gauge Steel

Reflector Material: Painted Steel

Wiring: Back and End Knock outs with luminaire disconnect

Lens Material: PMMA

Entries: End and back 1/2" knock-outs

SHIPPING INFORMATION

OrderingCode(s): TLNR22030K-UN4

Carton Quantity: 24

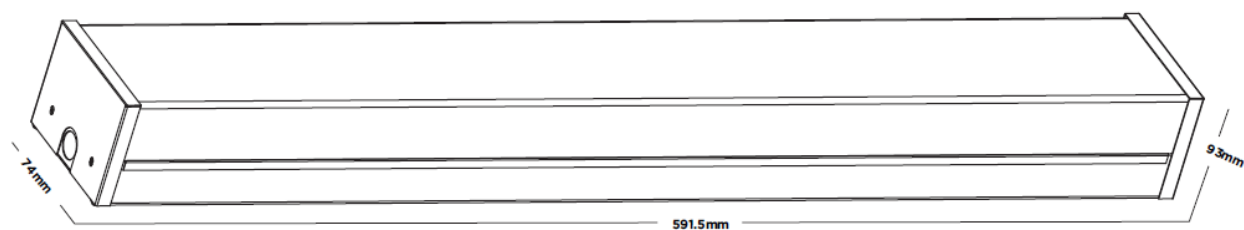
Box Quantity: 1

Carton Dimensions (L-W-H): 1220 x 315 x 345mm

Box Dimensions (L-W-H): 640 x 100 x 80 mm

LINE DRAWING

Line Drawings



SERIES ARCHITECTURE

Series Architecture

TLNR - - - - -												
Part	Length		Wattage				Voltage				Options	
TLNR	2	2FT	20	20W	30K	3000K	UNV	120-277VAC	[Blank]	White	OC	Occupancy Sensor ¹
	4	4FT	40	40W	35K	3500K	UN4	347VAC			EMOC	Emergency Battery Backup
					40K	4000K	WRV	120-347VAC				with Occupancy Sensor ²
					45K	4500K					FSIR-100	FSIR-100 Programmer
					50K	5000K						

¹OC defaults settings are; Sensitivity: 100%, Hold Time: 3min, Light Control: Disable, Standby Level: 0%, Standby Time: Infinity

²OC and EMOC options are UNV(120-277VAC) only. FSIR-100 Sold Separately

³FSIR-100 Sold Separately, one per project minimum