



Project:	
Location:	
Model#: TLNR44030K-UN4	Type:
Client:	Qty:
Prepared by:	Date:

SERIES SPECIFICATIONS

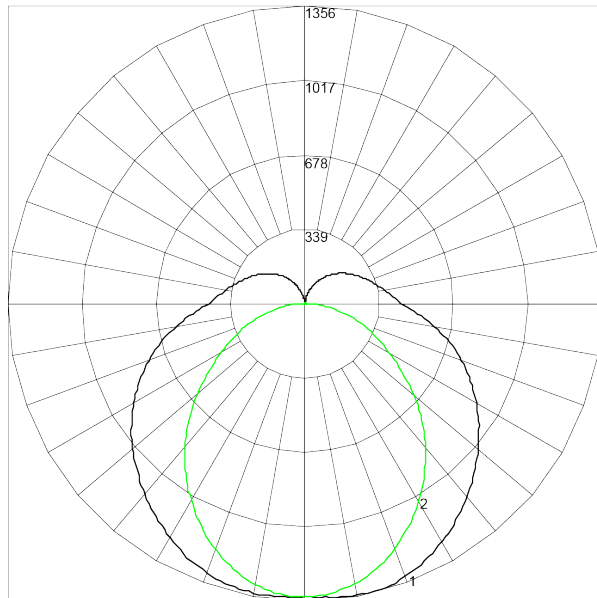


To supply Tamlite TLNR series of LED Wrap fixtures as specified. The luminaire shall operate at 347Vac. The housing shall be constructed of powder-coated Aluminium with a heat and impact resistant tempered PMMA lens. All parts shall be corrosion resistant. The LEDs shall be supplied with the luminaire. The fixture shall be cULus Listed.



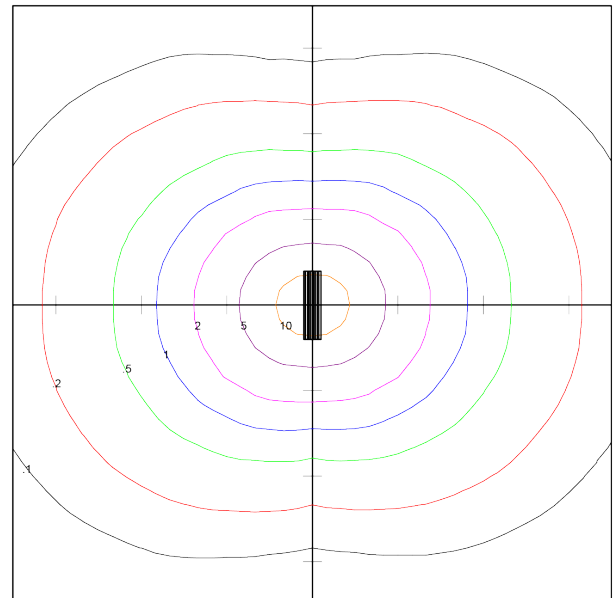
PERFORMANCE SPECIFICATIONS

Luminance Distribution Chart



Maximum Candela = 1356.18 Located At Horizontal Angle = 10, Vertical Angle = 12
 # 1 - Vertical Plane Through Horizontal Angles (0 - 180)
 # 2 - Vertical Plane Through Horizontal Angles (90 - 270)

Isolux Diagram



Tamlite Lighting
 TLNR44030K-UNV
 Tamlite 4FT LED Wrap Fixture

Horizontal Footcandles
 Scale: 1 Inch = 10 Ft.
 Light Loss Factor = 1.00
 Lumens Per Lamp = 5663
 Total Lamp Lumens = 5663
 Mounting Height = 10.00 Ft
 Maximum Calculated Value = 13.38 Fc
 Arrangement: Single



Project:	
Location:	
Model#: TLNR44030K-UN4	Type:
Client:	Qty:
Prepared by:	Date:

Zonal Lumen Summary

ZONE	LUMENS	ZONE	LUMENS	ZONE	LUMENS	ZONE	LUMENS	ZONE	LUMENS
0-10	127.24	40-50	732.69	80-90	372.5	120-130	126.76	160-170	7.13
10-20	367.94	50-60	711.25	90-100	267.36	130-140	86.63	170-180	0.77
20-30	561.93	60-70	634.27	100-110	216.78	140-150	51.37	--	--
30-40	685.28	70-80	519.09	110-120	170.3	150-160	23.89	--	--

Co-efficient of Utilization

CC	80				70				50			30			10			0
WALL	70	50	30	10	70	50	30	10	50	30	10	50	30	10	50	30	10	0
fc	20				20				20			20			20			0
RCR																		
0	115	115	115	115	110	110	110	110	102	102	102	94	94	94	87	87	87	83
1	102	97	91	87	98	93	88	84	85	81	78	78	75	73	72	70	68	64
2	92	83	75	69	88	79	72	67	73	67	62	67	63	59	62	58	55	52
3	83	72	63	56	79	69	61	54	64	57	51	59	53	48	54	49	45	42
4	76	63	54	47	72	61	52	46	56	49	43	52	46	41	48	43	39	36
5	70	56	47	40	66	54	45	39	50	43	37	46	40	35	43	37	33	31
6	64	50	41	35	61	49	40	34	45	38	32	42	35	31	39	33	29	26
7	59	46	37	30	57	44	36	30	41	34	28	38	32	27	35	30	26	23
8	55	41	33	27	53	40	32	26	37	30	25	35	28	24	32	27	23	21
9	52	38	30	24	49	37	29	23	34	27	22	32	26	21	30	24	20	18
10	48	35	27	22	46	34	26	21	32	25	20	30	24	19	28	22	19	17

Initial Lumen Output: 5223lm

Field Angle: 180 deg

Environmental Rating(s): IP20

Certification Standards: UL Safety US-
CA , DLC

Limited Product Warranty: 5 Year(s)

Efficacy: 128.61lm/W

Luminaire Type: Semi-Direct

UL Classification: Dry Location Only

DLC Number: WWWBTI

Beam Angle: 100 deg

Spacing Criteria: 1.2(0-180), 1.28(90-270)

Ambient Operating Temp: -20C to +40C

CCN Number: IFAM7.E359675

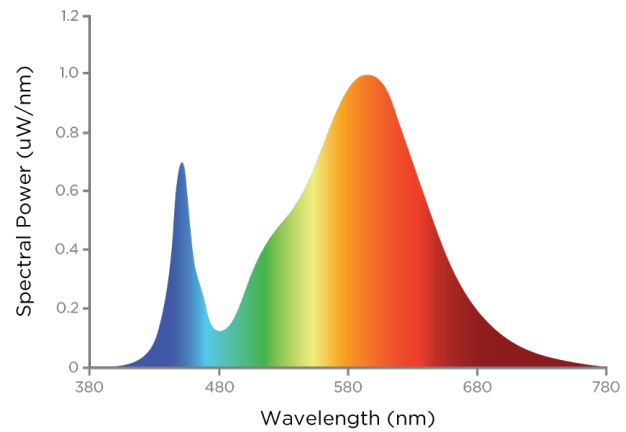
Project:	
Location:	
Model#: TLNR44030K-UN4	Type:
Client:	Qty:
Prepared by:	Date:

LED SPECIFICATIONS

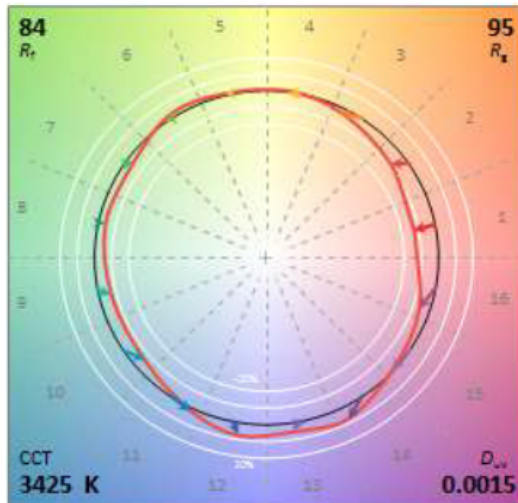
R Tables

R1	81	R9	6
R2	91	R10	81
R3	96	R11	80
R4	81	R12	71
R5	82	R13	84
R6	90	R14	98
R7	82	R15	74
R8	59	--	--

SPD



TM-30



Source Type: LED

Rg: 95

Duv: 0.0022

CRI: >80

L70: >50000 Hrs

Rf: 85

Colour Temperature: 3000K

Project:	
Location:	
Model#: TLNR44030K-UN4	Type:
Client:	Qty:
Prepared by:	Date:

ELECTRICAL SPECIFICATIONS

Driver Manufacturer: Antron
Fixture Draw: 40.84W
Dimming: 0-10Vdc, (0% Min Light Level)

Input Voltage: 347Vac
Current Draw@347Vac: 0.1172
Short Circuit Protection: Auto Recovery.
 The output shall return to normal when the fault condition is removed.

Input Frequency: 50-60Hz
Max On-Delay: < 1 S
Driver Certifications: c-RU-us Class 2, FCC Part 15 Class B, RoHS

PHYSICAL SPECIFICATIONS

Finish Colour: White
Mounting: Surface, Suspended
Lens Type: Frosted Prismatic

Finish Type: Textured Powder Coat over Chromate Conversion Coat
Housing Material: Heavy Gauge Steel
Reflector Material: Painted Steel

Wiring: Back and End Knock outs with luminaire disconnect
Lens Material: PMMA

SHIPPING INFORMATION

OrderingCode(s): TLNR44030K-347V

Carton Quantity: 12

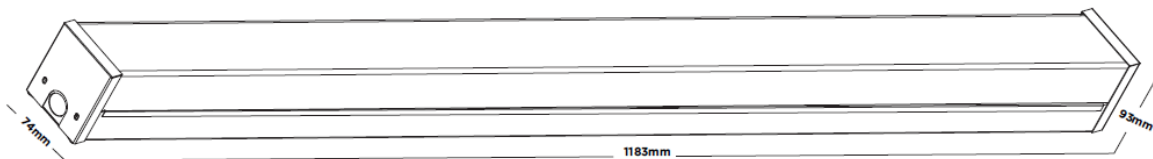
Box Quantity: 1

Carton Dimensions (L-W-H): 1220 x 315 x 345mm

Box Dimensions (L-W-H): 1205 x 315 x 345 mm

LINE DRAWING

Line Drawings





Project:	
Location:	
Model#: TLNR44030K-UN4	Type:
Client:	Qty:
Prepared by:	Date:

SERIES ARCHITECTURE

Series Architecture

TLNR - - - - -											
Part	Length		Wattage			Voltage				Options	
TLNR	2	2FT	20	20W	30K 3000K	UNV	120-277VAC	[Blank]	White	OC	Occupancy Sensor ¹
	4	4FT	40	40W	35K 3500K	UN4	347VAC			EMOC	Emergency Battery Backup
					40K 4000K	WRV	120-347VAC				with Occupancy Sensor ²
					45K 4500K					FSIR-100	FSIR-100 Programmer
					50K 5000K						

¹OC defaults settings are; Sensitivity: 100%, Hold Time: 3min, Light Control: Disable, Standby Level: 0%, Standby Time: Infinity

²OC and EMOC options are UNV(120-277VAC) only. FSIR-100 Sold Separately

³FSIR-100 Sold Separately, one per project minimum