



Project:	
Location:	
Model#: TLNR220SW-WRV	Type:
Client:	Qty:
Prepared by:	Date:

#### SERIES SPECIFICATIONS

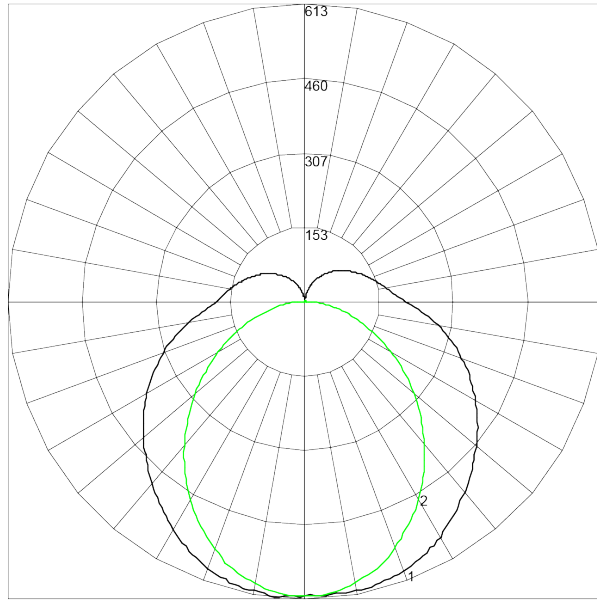


To supply TamLite TLNR series of LED Wrap fixtures as specified. The luminaire shall operate at 120-347Vac. The housing shall be constructed of powder-coated Aluminium with a heat and impact resistant tempered PMMA lens. All parts shall be corrosion resistant. The LEDs shall be supplied with the luminaire. The fixture shall be cULus Listed.



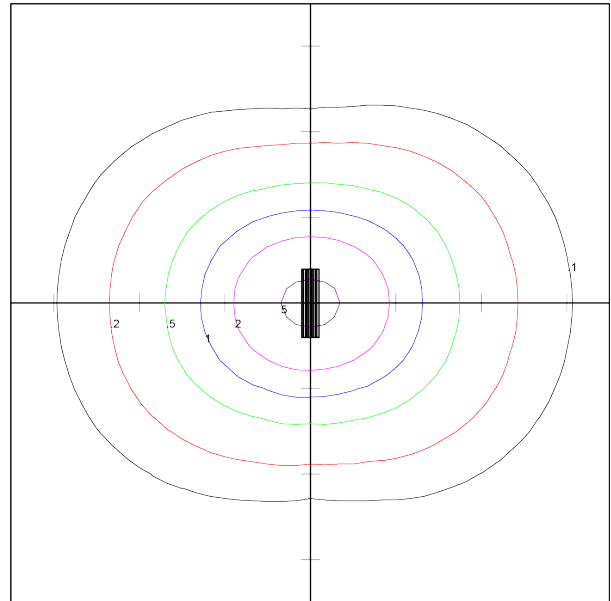
#### PERFORMANCE SPECIFICATIONS

## Luminance Distribution Chart



Maximum Candela = 613.28 Located At Horizontal Angle = 180, Vertical Angle = 5  
 # 1 - Vertical Plane Through Horizontal Angles (0 - 180)  
 # 2 - Vertical Plane Through Horizontal Angles (90 - 270)

## Isolux Diagram



Tamlite Lighting  
 TLNR22030K-UNV  
 Tamlite 2FT LED Wrap Fixture

Horizontal Footcandles  
 Scale: 1 Inch = 10 Ft.  
 Light Loss Factor = 1.00  
 Lumens Per Lamp = 2491.6  
 Total Lamp Lumens = 2491.6  
 Mounting Height = 10.00 Ft  
 Maximum Calculated Value = 6.08 Fc  
 Arrangement: Single

## Zonal Lumen Summary

ZONE	LUMENS	ZONE	LUMENS	ZONE	LUMENS	ZONE	LUMENS	ZONE	LUMENS
0-10	57.62	40-50	321.63	80-90	160.02	120-130	56.55	160-170	3.67
10-20	165.44	50-60	310.2	90-100	116.8	130-140	38.98	170-180	0.5
20-30	250.7	60-70	275.72	100-110	95.75	140-150	23.73	--	--
30-40	303.07	70-80	223.84	110-120	75.72	150-160	11.56	--	--

## Co-efficient of Utilization

CC	80				70				50			30			10			0
WALL	70	50	30	10	70	50	30	10	50	30	10	50	30	10	50	30	10	0
fc	20				20				20			20			20			0
RCR																		
0	115	115	115	115	110	110	110	110	102	102	102	94	94	94	86	86	86	83
1	102	97	92	87	98	93	88	84	85	82	78	78	75	73	72	70	68	64
2	92	83	75	69	88	80	73	67	73	68	63	67	63	59	62	58	55	52
3	84	72	63	56	80	69	61	55	64	57	52	59	53	49	54	50	46	43
4	76	64	54	47	73	61	53	46	56	49	43	52	46	41	48	43	39	36
5	70	57	47	40	67	54	46	39	50	43	37	47	40	35	43	38	33	31
6	64	51	41	35	61	49	40	34	45	38	32	42	36	31	39	33	29	27
7	60	46	37	31	57	44	36	30	41	34	28	38	32	27	35	30	26	24
8	55	42	33	27	53	40	32	26	38	30	25	35	29	24	33	27	23	21
9	52	38	30	24	49	37	29	24	34	28	23	32	26	22	30	25	21	19
10	48	35	27	22	46	34	26	21	32	25	21	30	24	20	28	23	19	17

**Initial Lumen Output:** 2451lm

**Beam Angle:** 100 deg

**Spacing Criteria:** 1.2(0-180), 1.28(90-270)

**Ambient Operating Temp:** -20C to +40C

**CCN Number:** IFAM7.E359675

**Efficacy:** 116.6lm/W

**Field Angle:** 180 deg

**Environmental Rating(s):** IP20

**Certification Standards:** UL Safety US-CA

, DLC

**Limited Product Warranty:** 5 Year(s)

**CBCP:** 613cd

**Luminaire Type:** Semi-Direct

**UL Classification:** Dry Location Only

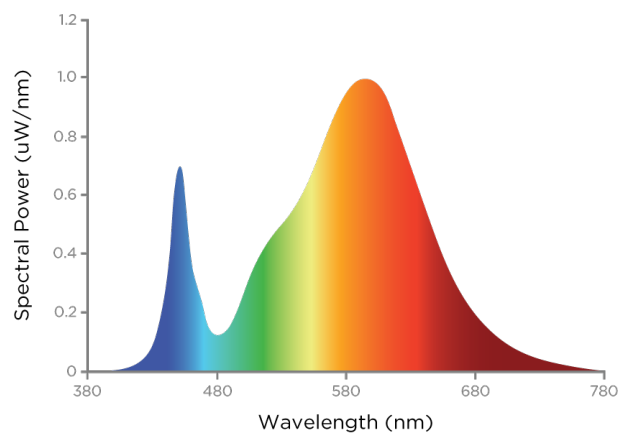
**DLC Number:** WWWBTI

## LED SPECIFICATIONS

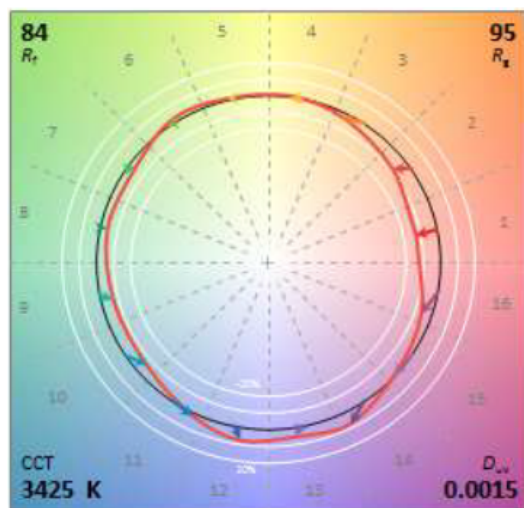
### R Tables

R1	81	R9	6
R2	91	R10	81
R3	96	R11	80
R4	81	R12	71
R5	82	R13	84
R6	90	R14	98
R7	82	R15	74
R8	59	--	--

### SPD



### TM-30



Source Type: LED

Rg: 95

Duv: 0.0021

CRI: >80

L70: >50000 Hrs

Rf: 85

Colour Temperature: 3500K

## ELECTRICAL SPECIFICATIONS

**Driver Manufacturer:** Arcata

**Fixture Draw:** 19.64W

**Max On-Delay:** 1 S

**Short Circuit Protection:** Auto Recovery.  
The output shall return to normal when the fault condition is removed.

**Input Voltage:** 120~347Vac

**Current Draw@ 120Vac:** 0.1637A

**Dimming:** 0-10Vdc, (0% Min Light Level)

**Driver Certifications:** c-RU-us Class 2,  
FCC Part 15 Class B, RoHS

**Input Frequency:** 50-60Hz

**Current Draw@ 277Vac:** 0.0709A

**Over Temperature Protection:** Auto  
Recovery. The output shall return to normal  
when the over heating condition is removed.

## PHYSICAL SPECIFICATIONS

**Finish Colour:** White

**Mounting:** Surface, Suspended

**Lens Type:** Frosted Prismatic

**Finish Type:** Textured Powder Coat over  
Chromate Conversion Coat

**Housing Material:** Heavy Gauge Steel

**Reflector Material:** Painted Steel

**Wiring:** Back and End Knock outs with  
luminaire disconnect

**Lens Material:** PMMA

**Entries:** End and back 1/2" knock-outs

## SHIPPING INFORMATION

**OrderingCode(s):** TLNR22035K-UN4

**Carton Quantity:** 24

**Box Quantity:** 1

**Carton Dimensions (L-W-H):** 1220 x 315 x  
345mm

**Box Dimensions (L-W-H):** 640 x 100 x 80  
mm

## LINE DRAWING

### Line Drawings

