



Project:	
Location:	
Model#: SEL-2	Type:
Client:	Qty:
Prepared by:	Date:

SERIES SPECIFICATIONS

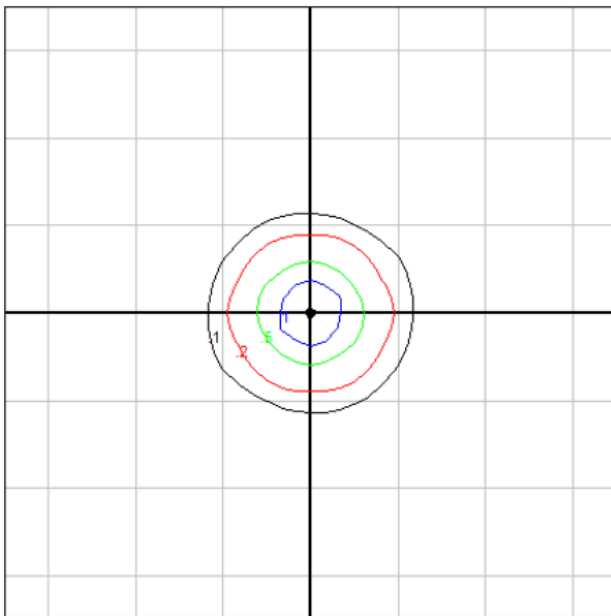


High-performance and reliability encapsulate the essence of the Tamlite Lighting SEL-2 EMERGENCY light. Designed with robust, flame-retardant housing and equipped with dual adjustable LED heads, as well as remote capability upto 32W, this emergency light ensures optimal illumination and safety during power failures. Ideal for a variety of settings including commercial, industrial, and residential areas, the SEL-2 features a compact, easy-to-install design and a powerful battery backup for continued operation in emergencies. Essential for maintaining visibility and safety, this unit is a top choice for emergency lighting solutions.



PERFORMANCE SPECIFICATIONS

Isolux Diagram



Initial Lumen Output: 212

Beam Angle: 60

Ambient Operating Temp: 3°C to 30°C /
37.4°F to +86°F

Efficacy: 35

Luminaire Type: Emergency Battery

Certification Standards: UL924, C22.2
No. 141-15

Max Candela: 170.9cd

Environmental Rating(s): Damp location

Limited Product Warranty: 3 years for
battery, 3 years for fixture



Project:	
Location:	
Model#: SEL-2	Type:
Client:	Qty:
Prepared by:	Date:

LED SPECIFICATIONS

Source Type: LED
Colour Temperature: 6000

CRI: > 80

L70: >54,000 Hrs

ELECTRICAL SPECIFICATIONS

Input Voltage: 120V-347Vac
Current Draw at 277Vac: 0.23A
Power Factor at 120Vac: > 0.8
Over Temperature Protection: YES

Input Frequency: 50/60 Hz
Current Draw at 347Vac: 0.27A
Power Factor at 277Vac: > 0.8
Short Circuit Protection: YES

Current Draw at 120Vac: 0.19A
Max On-Delay: Power Factor at 347Vac:
> 0.8

EMERGENCY INFORMATION

Input Voltage: 120V-347V
Emergency Runtime: >90minutes
Emergency Certifications: UL924

Max Power Input: 6W
Battery Type: lead battery

Output Power: 2*2W
Battery Recharge Time: 24hours

PHYSICAL SPECIFICATIONS

Finish Colour: White

Lens Material: PC

SHIPPING INFORMATION

OrderingCode(s): 0625-2654 SEL-2 LED
STEEL EM 32W RC 120/347
Carton Quantity: 5

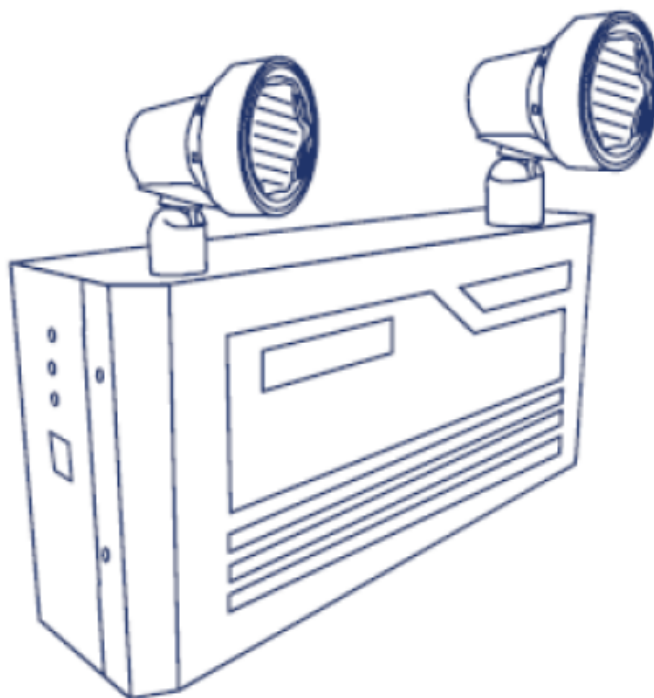
Box Quantity: 1
Carton Dimensions (L-W-H): 470 x 340 x
255 mm / 0.3 x 0 x 470 inches

Box Dimensions (L-W-H): 330 x 254 x
102 mm / 13 x 10 x 4 inches
Carton Weight: 13.6

Project:	
Location:	
Model#: SEL-2	Type:
Client:	Qty:
Prepared by:	Date:

LINE DRAWING

Line Drawings



MODEL	AC SPECS		DC WATTAGE CAPACITY*			
			30MIN	60MIN	90MIN	120MIN
SEL-2	120/347VAC	0.06/0.02A	32W	16W	10W	8W

*Does not include voltage drop in the wire used between the Battery and Remote Heads

*Include the preconnected heads (2@2W) in this total