



|                                |       |
|--------------------------------|-------|
| Project:                       |       |
| Location:                      |       |
| Model#: AL-300WS-3CS-WRV-SO-BZ | Type: |
| Client:                        | Qty:  |
| Prepared by:                   | Date: |

## SERIES SPECIFICATIONS

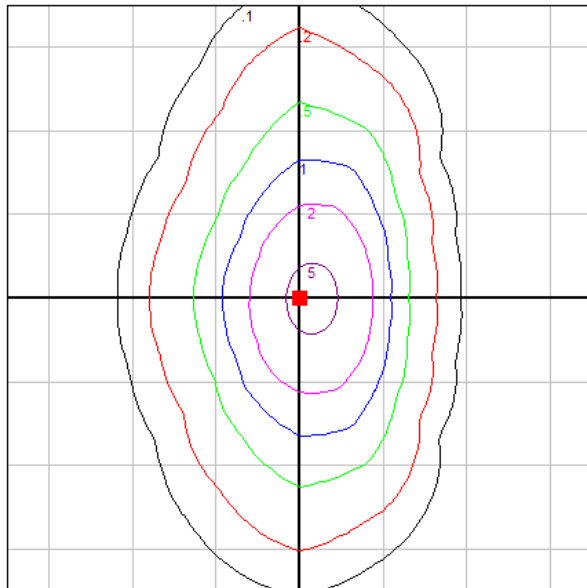


The Tamlite Lighting AL Series Area Light offers unparalleled customizability at your fingertips. Featuring quick swap optics, three different wattage and three CCT selection options, this fixture has 81 different configurations. The built in z10 socket and twist lock allow for motion and photo controls to be added without the need for tools, cutting down on your time in the air.



## PERFORMANCE SPECIFICATIONS

### Isolux Diagram



**Initial Lumen Output:** 33,592lm at 4000K  
**T5**  
**Beam Angle:** T5, T4, T3 optic panels provided  
**Environmental Rating(s):** Wet Location Listed  
**Certification Standards:** cULus, DLC-Premium

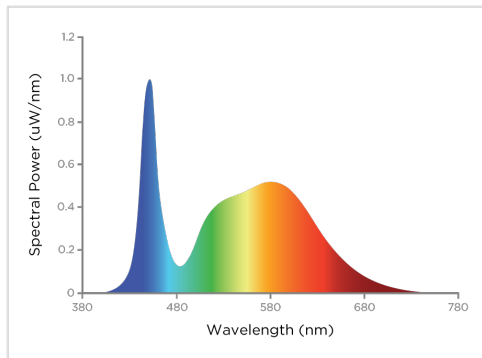
**Efficacy:** 150 lm/W  
**Luminaire Type:** Type V - Medium  
**UL Classification:** IFAM  
**Limited Product Warranty:** 5 Year(s)

**Max Candela:** 10,680cd (45H, 70V)  
**BUG Rating:** B3-U0-G3  
**Ambient Operating Temp:** -40°C to 50°C / -40°F to +122°F

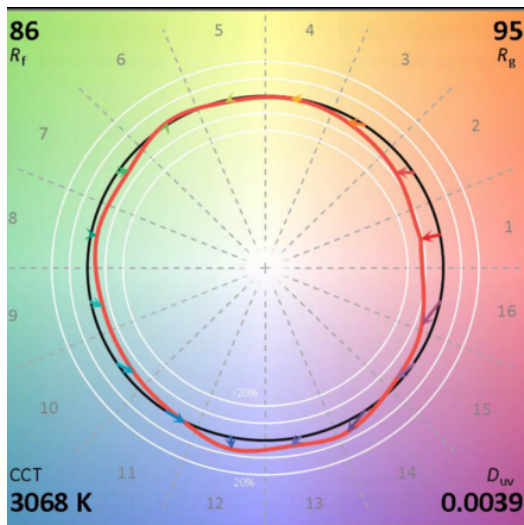
|                                |       |
|--------------------------------|-------|
| Project:                       |       |
| Location:                      |       |
| Model#: AL-300WS-3CS-WRV-SO-BZ | Type: |
| Client:                        | Qty:  |
| Prepared by:                   | Date: |

## LED SPECIFICATIONS

### SPD



### TM-30



**Source Type:** LED  
**CRI:** > 80  
**L70:** >102,000 Hrs  
**Chromaticity:** X=0.4377 Y=0.4141

**Manufacturer:** Lumileds  
**Rf:** 86  
**L90:** >63,000 Hrs  
**Colour Tolerance:**

**Part Number:** L128  
**Rg:** 95  
**Colour Temperature:** 5000K  
**Duv:** 0.0039

|                                |       |
|--------------------------------|-------|
| Project:                       |       |
| Location:                      |       |
| Model#: AL-300WS-3CS-WRV-SO-BZ | Type: |
| Client:                        | Qty:  |
| Prepared by:                   | Date: |

## ELECTRICAL SPECIFICATIONS

**Input Voltage:** 120-347Vac

**Current Draw at 120Vac:** 02.5000A

**Auxiliary Control:** 12 Vdc

**THD at 120Vac(%):** 20

**Dimming:** YES

**Input Frequency:** 50/60 Hz

**Current Draw at 347Vac:** 00.9247A

**Power Factor at 120Vac:** > 0.95

**THD at 347Vac(%):** 20

**Over Temperature Protection:** YES

**Fixture Draw:** 298.40 W

**Max On-Delay: Power Factor at 347Vac:**  
> 0.95

**Surge Suppression:** YES

**Short Circuit Protection:** YES

## PHYSICAL SPECIFICATIONS

**Weight:** 14.3 lbs, NO MOUNTING

**EPA:** 1.23 SQFT @45d SINGLE FIXTURE

## SHIPPING INFORMATION

**OrderingCode(s):** 0627-8691 AL-300WS-3CS-W-S0-NM-BZ 300/240/200W 3/4/5K 120-347V T3/T4/T5, Mounting Not included.

**Box Weight:** 31.5 kg /14.3 lbs

**Box Quantity:** 1

**Box Dimensions (L-W-H):** 660 x 405 x 35 mm / 26 x 15.9 x 1.4 inches

## LINE DRAWING

### Line Drawings

#### AL Fixture

