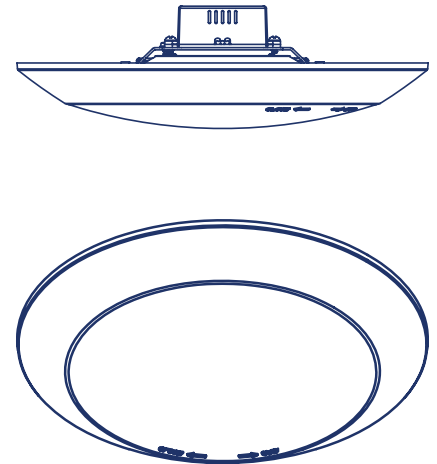


MODELS:
RFJ654

ELECTRICAL RATINGS:

Item	Model	Input Voltage	Power Factor	Watt	Input Current
A	RFJ654-xx-zz	120VAC	≥ 0.9	15.5W	0.1550A

"xx" refers to colour temperature.
"zz" refers to finish colour.



WARNINGS

Disconnect the electrical supply power at the service panel (fuse or circuit breaker box). Failure to comply could result in serious injury. Only qualified electricians should install this luminaire and the installation must conform to the applicable National Electrical Code and any local codes and ordinances. Make sure you have the proper tools and materials to complete the installation before attempting to install this luminaire. For supply connections, use wire rated for 90°C minimum. This luminaire is not intended to be connected to a two-wire grounded supply. Luminaire must be grounded.

SAFETY PRECAUTIONS

- Before starting the installation, disconnect the power by turning off the circuit breaker.
- Turning the power off by using the light switch is not sufficient to prevent electrical shock.
- Prior to installation, check that the supply voltage is the same as the luminaire rated voltage.
- A qualified electrician must perform installation.
- This luminaire must be wired in accordance with the National Electrical Code, and all applicable local codes and ordinances
- Suitable For Wet Locations.

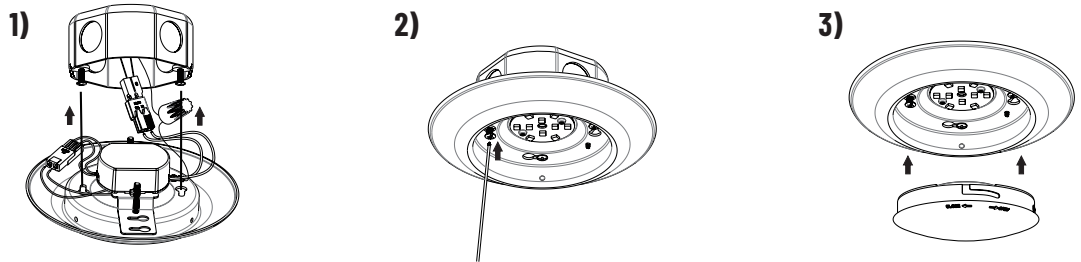
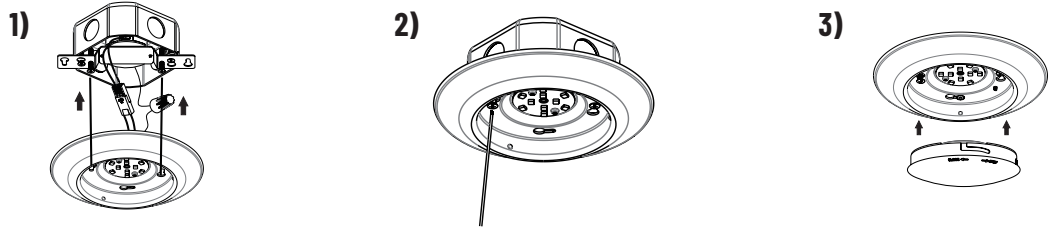
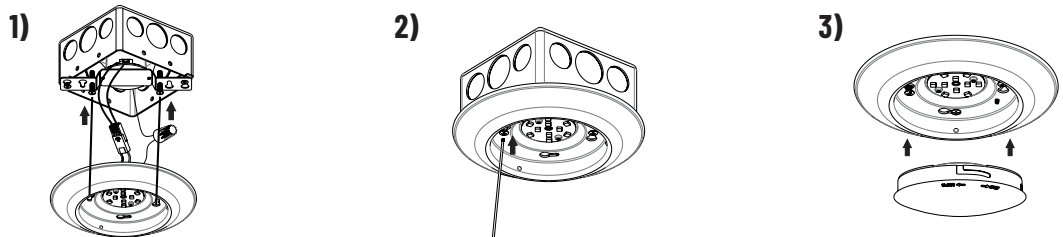
COMMISSIONING

Once installed please ensure that the luminaire is firmly fixed via the method used, and ensure that the wires are connected correctly before energizing the supply conductors.

Turn the power on, and check to ensure the luminaire works as intended. If not, de-energize and check connections, and contact your local dealer.

INSTALLATION**JUNCTION BOX MOUNTING**

1. Connect black luminaire wire to line voltage J-Box wire using wire nut (included).
Connect white luminaire wire to neutral J-Box wire using wire nut (included).
Connect the ground wires (bare copper or green) with wire nut (included). Verify all wires are secure.
2. Screw Luminaire to J-box using the two screws provided
3. Install lens by pushing into place and twisting to lock

3.5" Octagon, 1 1/2" Deep**4" Octagon, 1 1/2" Deep****4" Square, 2" Deep****TROUBLESHOOTING**

If luminaire does not work upon completion of installation:

1. Check your power source for connectivity, and correct voltage.
2. Check the electrical connections of the luminaire to the power source.
3. Check to ensure luminaire is grounded.
4. Ensure LED Driver is connected to luminaire wiring.

If luminaire still does not work, please call TamLite Lighting, or your local point of sale.